

MONUMENT 96

CERTIFICATE OF LOCATION OF GOVERNMENT CORNER

West Quarter Corner of Section 11, Township 30 North, Range 22 West,
County of Ramsey, State of Minnesota.

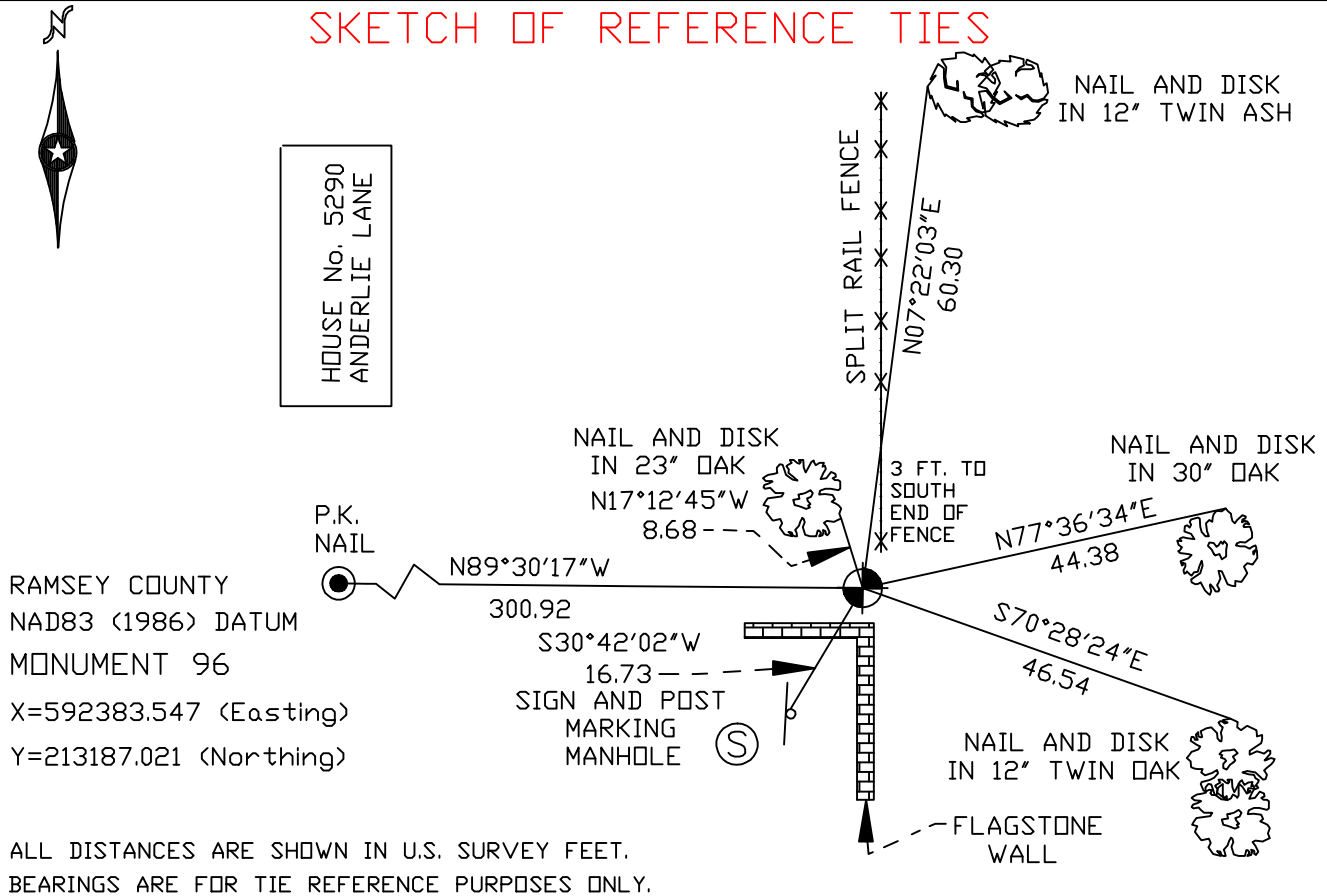
At the corner location shown on the sketch

On October 26, 2004 found a cast iron monument.

left monument as found, lowered monument, removed monument (explain)

On _____ placed a _____

SKETCH OF REFERENCE TIES



Statements of evidence relative to this corner are on the following page(s).

I hereby certify that this document and the data contained herein was prepared by me or under my direct supervision this _____ day of _____, 20____.

SIGNATURE

Minnesota License No. _____
 Land Surveyor Professional Engineer
 County Surveyor County Engineer

OFFICE OF COUNTY SURVEYOR

County of Ramsey

I hereby certify that this document was filed in the County Surveyor's office on the _____ day of _____, 20____.

David D. Claypool, P.L.S., County Surveyor

By _____, Deputy

MONUMENT 96

Found ½ in. inner diameter pipe placed by La Vayne Dupslaff (M.W. Carley). Replaced with a cast iron monument, May 15, 1974.

Cast iron monument at corner of wall; retied, December 4, 1992.

Retied monument, October 4, 1999.

Corner of flagstone wall is over monument. Set sign and post 8 in. north of monument, October 22, 1999.

Retied monument, October 26, 2004.