

MONUMENT 97E

CERTIFICATE OF LOCATION OF GOVERNMENT CORNER

Monument near the East-West Quarter Line, East of the Center of Section 11, Township 30 North, Range 22 West, County of Ramsey, State of Minnesota.

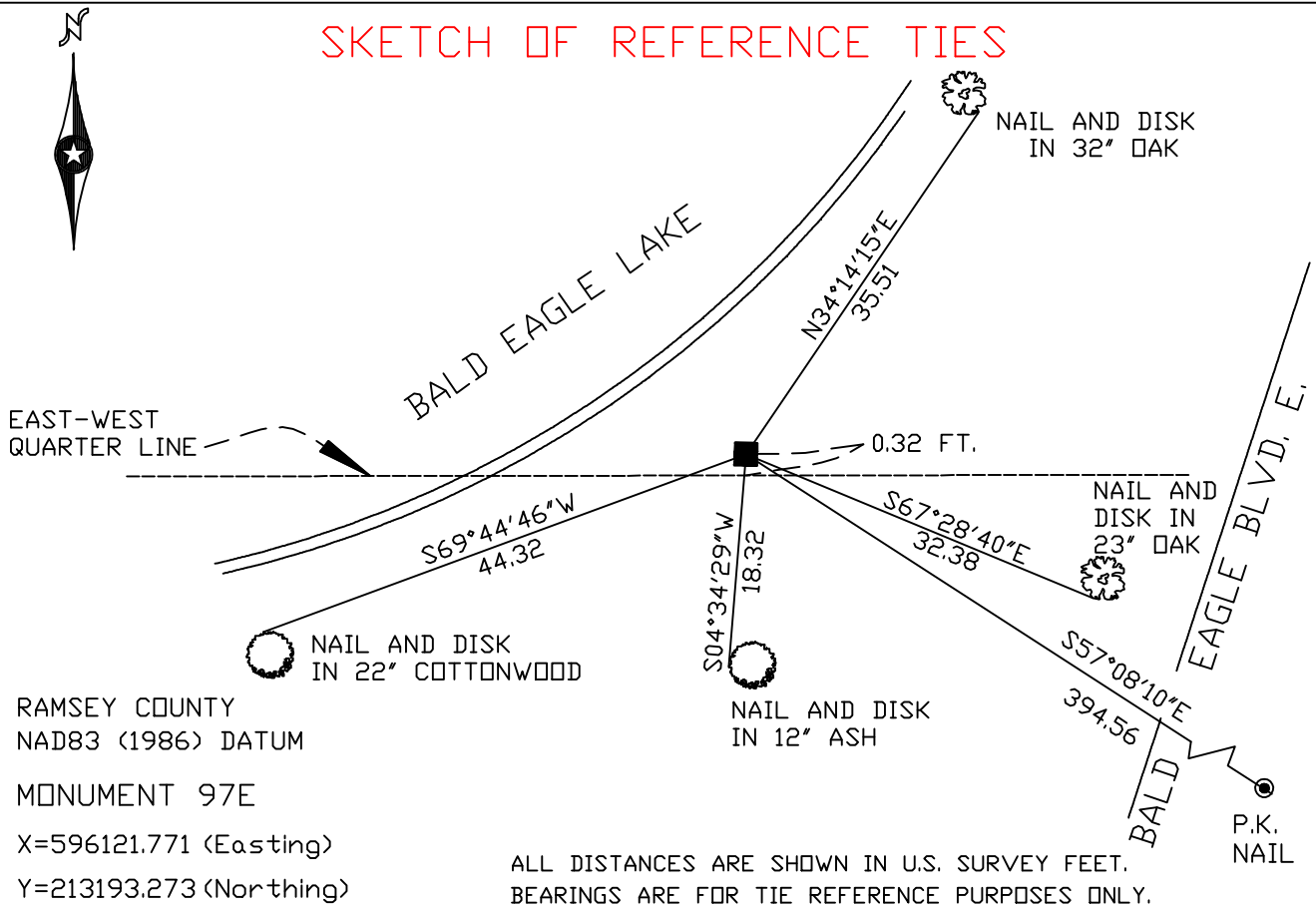
At the corner location shown on the sketch

On October 26, 2004 found a granite monument.

left monument as found, lowered monument, removed monument (explain)

On _____ placed a _____

SKETCH OF REFERENCE TIES



Statements of evidence relative to this corner are on the following page(s).

I hereby certify that this document and the data contained herein was prepared by me or under my direct supervision this _____ day of _____, 20____.

SIGNATURE
Minnesota License No. _____
 Land Surveyor Professional Engineer
 County Surveyor County Engineer

OFFICE OF COUNTY SURVEYOR
County of Ramsey

I hereby certify that this document was filed in the County Surveyor's office on the _____ day of _____, 20____.

David D. Claypool, P.L.S., County Surveyor

By _____, Deputy

MONUMENT 97E

Found a granite monument, flush, May 13, 1974.

Retied monument, February 21, 1984.

Retied monument, December 7, 1999.

Retied monument, October 26, 2004.