

MONUMENT 99

CERTIFICATE OF LOCATION OF GOVERNMENT CORNER

Center of Section 12, Township 30 North, Range 22 West, County of Ramsey, State of Minnesota.

At the corner location shown on the sketch

On October 12, 2004 found a granite monument.

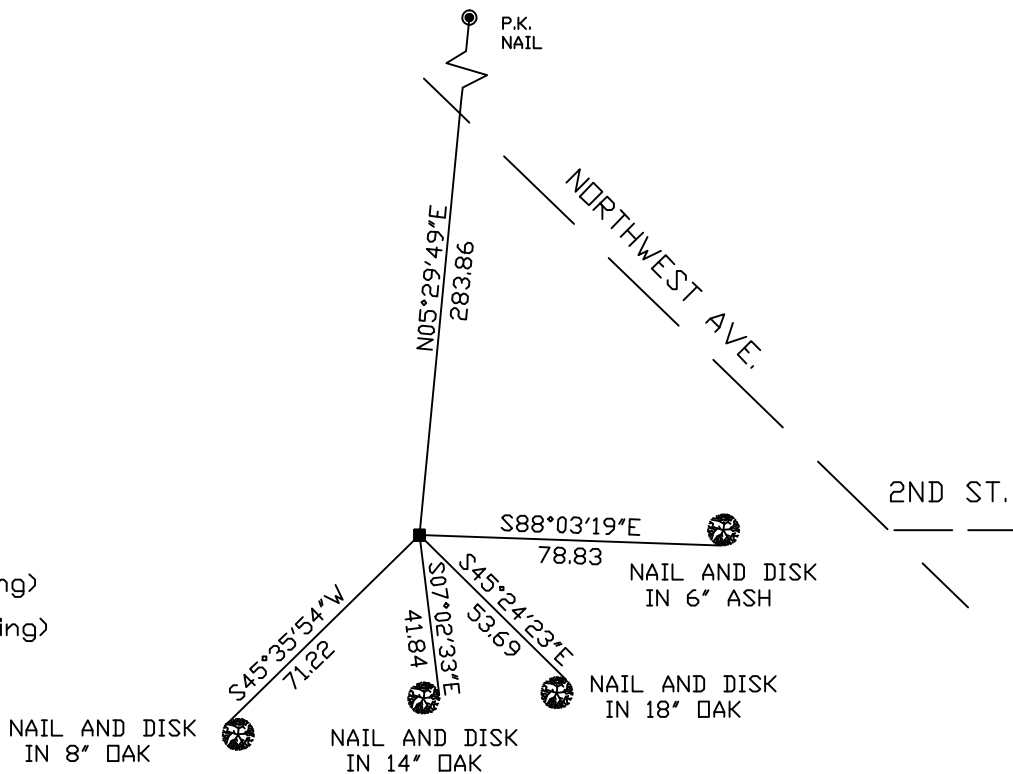
left monument as found, lowered monument, removed monument (explain)

On _____ placed a _____

SKETCH OF REFERENCE TIES



RAMSEY COUNTY
 NAD83 (1986) DATUM
 MONUMENT 99
 X=600335.838 (Easting)
 Y=213218.496 (Northing)



ALL DISTANCES ARE SHOWN IN U.S. SURVEY FEET.
 BEARINGS ARE FOR TIE REFERENCE PURPOSES ONLY.

Statements of evidence relative to this corner are on the following page(s).

I hereby certify that this document and the data contained herein was prepared by me or under my direct supervision this _____ day of _____, 20____.

SIGNATURE

Minnesota License No. _____

- Land Surveyor Professional Engineer
 County Surveyor County Engineer

OFFICE OF COUNTY SURVEYOR
 County of Ramsey

I hereby certify that this document was filed in the County Surveyor's office on the _____ day of _____, 20____.

David D. Claypool, P.L.S., County Surveyor

By _____, Deputy

MONUMENT 99

Granite monument set, December 22, 1903.

East Quarter corner position moved, center of section was adjusted; see survey book "N", page 21. Available at Ramsey County Public Works file room, August, 1905.

Found granite monument flush and retied, July 18, 1974.

Found granite monument flush and retied, December 4, 1992.

Granite monument found up 0.1 ft.; set a sign and post +/-1 ft. west of monument, December 8, 1999.

Retied monument, October 12, 2004.