

# MONUMENT 206

## CERTIFICATE OF LOCATION OF GOVERNMENT CORNER

North Quarter Corner of Section 28, Township 30 North, Range 23 West,  
County of Ramsey, State of Minnesota.

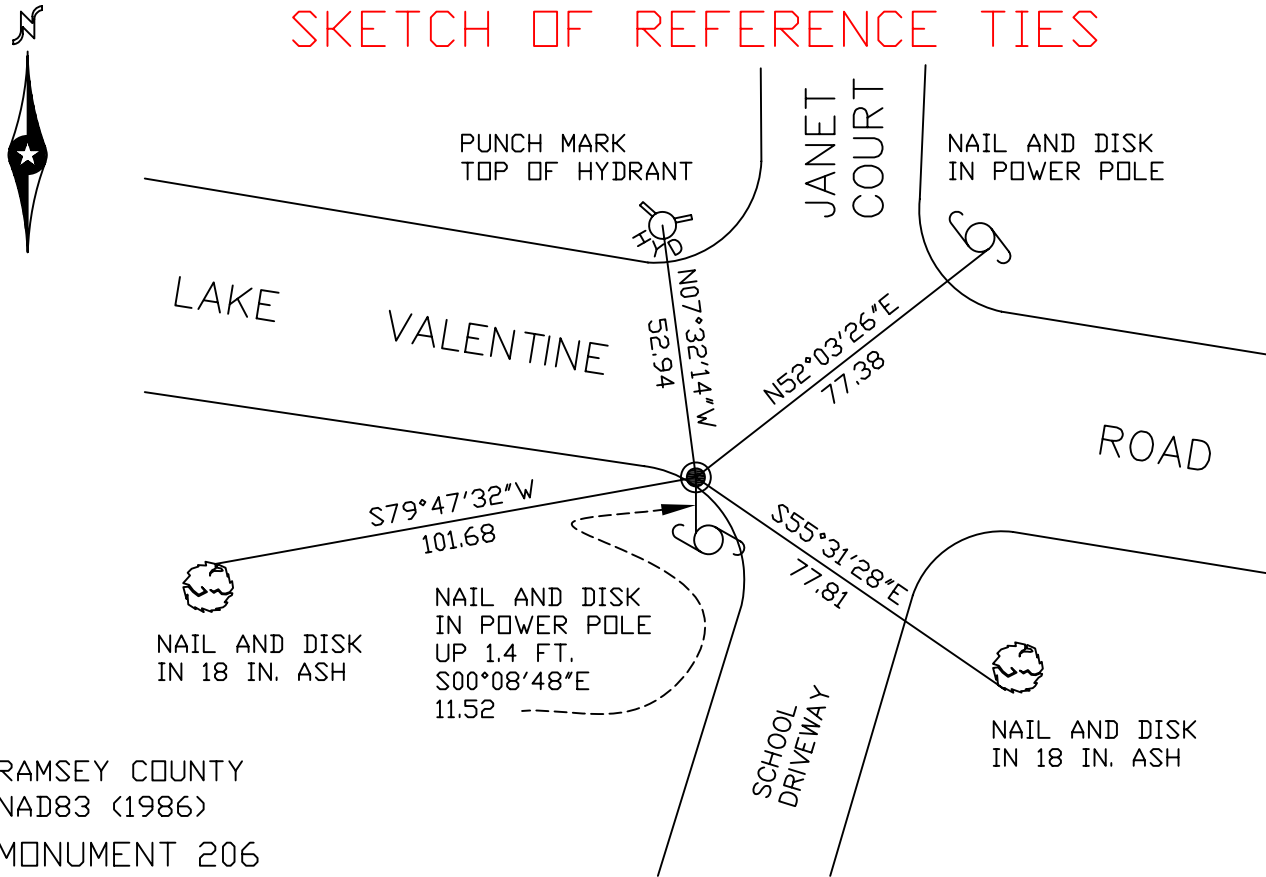
At the corner location shown on the sketch

On July 30, 2007 found a brass disk in curb gutter.

left monument as found     lowered monument     removed monument (explain)

On \_\_\_\_\_ placed a \_\_\_\_\_

### SKETCH OF REFERENCE TIES



RAMSEY COUNTY  
NAD83 (1986)  
MONUMENT 206

X= 553080.678 (Easting)  
Y= 199820.102 (Northing)

ALL DISTANCES ARE SHOWN IN U.S. SURVEY FEET.  
BEARINGS ARE FOR TIE REFERENCE PURPOSES ONLY.

Statements of evidence relative to this corner are on the following page(s).

I hereby certify that this document and the data contained herein was prepared by me or under my direct supervision this \_\_\_\_\_ day of \_\_\_\_\_, 20\_\_\_\_.

SIGNATURE

Minnesota License No. \_\_\_\_\_

- County Surveyor  
 Deputy County Surveyor     Land Surveyor

OFFICE OF COUNTY SURVEYOR  
County of Ramsey

I hereby certify that this document was filed in the County Surveyor's office on the \_\_\_\_ day of \_\_\_\_\_, 20\_\_\_\_.

David D. Claypool, P.L.S., County Surveyor

By \_\_\_\_\_, Deputy

## MONUMENT 206

Found a cast iron monument, flush; retied monument, 1975.

Retied monument, down +/- 0.4 ft., January 7, 1992.

Tied out monument and removed for construction, July 7, 1995.

Set a 2 1/2 in. brass disk in curb gutter, July 30, 1996.

Retied monument, November 21, 2002.

Retied monument, July 30, 2007.