

MONUMENT 238

CERTIFICATE OF LOCATION OF GOVERNMENT CORNER

East Quarter Corner of Section 25, Township 30 North, Range 23 West, County of Ramsey, State of Minnesota.

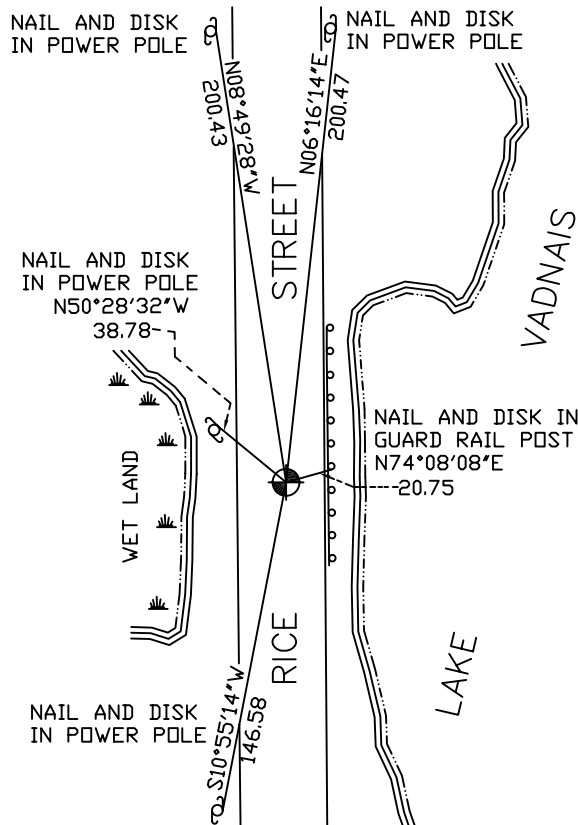
At the corner location shown on the sketch

On August 24, 2007 found a cast iron monument, flush.

left monument as found lowered monument removed monument (explain)

On _____ placed a _____

SKETCH OF REFERENCE TIES



RAMSEY COUNTY
NAD83 (1986)

MONUMENT 238

X= 571587.373 (Easting)
Y= 197263.802 (Northing)

ALL DISTANCES ARE SHOWN IN U.S. SURVEY FEET.
BEARINGS ARE FOR TIE REFERENCE PURPOSES ONLY.

Statements of evidence relative to this corner are on the following page(s).

I hereby certify that this document and the data contained herein was prepared by me or under my direct supervision this _____ day of _____, 20____.

SIGNATURE

Minnesota License No. _____

- County Surveyor
 Deputy County Surveyor Land Surveyor

OFFICE OF COUNTY SURVEYOR

County of Ramsey

I hereby certify that this document was filed in the County Surveyor's office on the ____ day of _____, 20____.

David D. Claypool, P.L.S., County Surveyor

By _____, Deputy

MONUMENT 238

Found a P.K. nail in bituminous road surface. Found 0.5 in. inside diameter iron, 1.38 ft. long, down 1.19 ft. Found old road surface down 2.9 ft. with 1.5 in. diameter iron in old pavement, July 1, 1975.

Placed a 20 in. cast iron monument, July 7, 1975.

Retied monument, December 20, 1991.

Monument down 5 in.; set a 4 5/8 in. cast iron monument over top and cemented in place, October 13, 1993.

Retied monument, December 4, 2002.

Retied monument, August 24, 2007.