

MONUMENT 357N

CERTIFICATE OF LOCATION OF GOVERNMENT CORNER

Witness Corner South of the West Quarter Corner of Section 1, Township 29 North, Range 23 West, County of Ramsey, State of Minnesota.

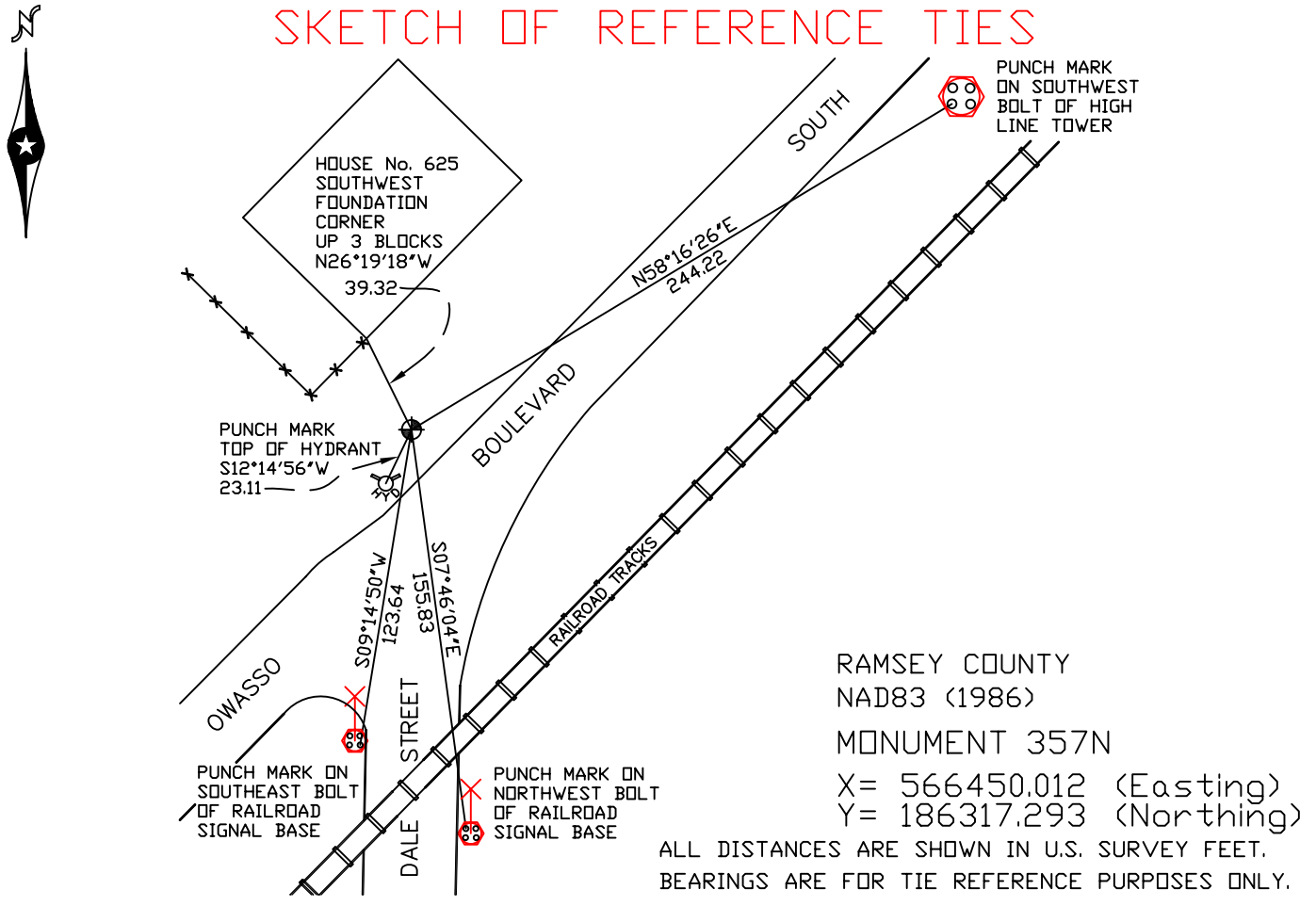
At the corner location shown on the sketch

On August 6, 2007 found a cast iron monument down 0.3 feet.

left monument as found lowered monument removed monument (explain)

On _____ placed a _____

SKETCH OF REFERENCE TIES



Statements of evidence relative to this corner are on the following page(s).

I hereby certify that this document and the data contained herein was prepared by me or under my direct supervision this _____ day of _____, 20____.

SIGNATURE

Minnesota License No. _____

- County Surveyor
 Deputy County Surveyor Land Surveyor

OFFICE OF COUNTY SURVEYOR

County of Ramsey

I hereby certify that this document was filed in the County Surveyor's office on the ____ day of _____, 20____.

David D. Claypool, P.L.S., County Surveyor

By _____, Deputy

MONUMENT 357N

Granite monument set 70.89 ft. south of west quarter corner in 1897.

Used old ties for digging; dug down 7 ft. and found a granite monument.
Placed a cast iron monument over granite monument, down 0.2 ft., April, 1974.

Retied monument, July 31, 1974.

Checked monument, March 26, 1985.

Sign and post set +/- 1 ft. northwesterly of monument, September 19, 1996.

Retied monument, August 9, 2002.

Retied monument, August 6, 2007.