

# MONUMENT 57

## CERTIFICATE OF LOCATION OF GOVERNMENT CORNER

Southwest Corner of Section 3, Township 30 North, Range 23 West, County of Ramsey, State of Minnesota.

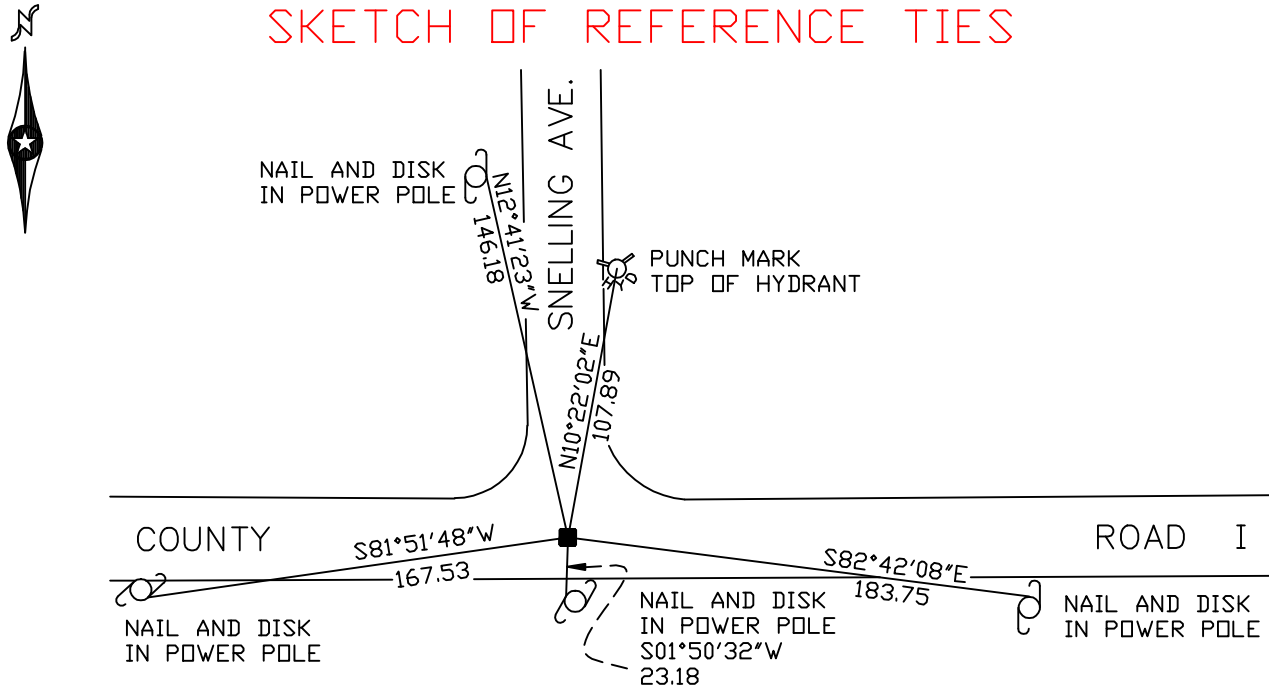
At the corner location shown on the sketch

On June 21, 2007 found a granite monument within a cast iron manhole assembly.

left monument as found     lowered monument     removed monument (explain)

On \_\_\_\_\_ placed a \_\_\_\_\_

## SKETCH OF REFERENCE TIES



RAMSEY COUNTY  
NAD83 (1986)  
MONUMENT 57

X= 555562.317 (Easting)  
Y= 215614.412 (Northing)

ALL DISTANCES ARE SHOWN IN U.S. SURVEY FEET.  
BEARINGS ARE FOR TIE REFERENCE PURPOSES ONLY.

Statements of evidence relative to this corner are on the following page(s).

I hereby certify that this document and the data contained herein was prepared by me or under my direct supervision this \_\_\_\_\_ day of \_\_\_\_\_, 20\_\_\_\_.

SIGNATURE

Minnesota License No. \_\_\_\_\_

County Surveyor     Land Surveyor

OFFICE OF COUNTY SURVEYOR

County of Ramsey

I hereby certify that this document was filed in the County Surveyor's office on the \_\_\_\_ day of \_\_\_\_\_, 20\_\_\_\_.

David D. Claypool, P.L.S., County Surveyor

By \_\_\_\_\_, Deputy

## MONUMENT 57

**Found railroad spike. Dug down 0.5 ft. to granite monument. Placed 5 in. cast iron monument, November 20, 1974.**

**Retied monument, January 28, 1976.**

**Retied monument, February 2, 1993.**

**Retied monument, July 2, 2003.**

**Cast iron monument removed for road milling project, April 06, 2005.**

**Set cast iron manhole assembly over granite monument, June 20, 2005.**

**Found cast iron monument within a cast iron manhole assembly and tied out, June 21, 2007.**