

MONUMENT 739N

CERTIFICATE OF LOCATION OF GOVERNMENT CORNER

Meander Corner No. 43 on the East Line of the Southeast Quarter of Section 13, Township 28 North, Range 22 West, County of Ramsey, State of Minnesota.

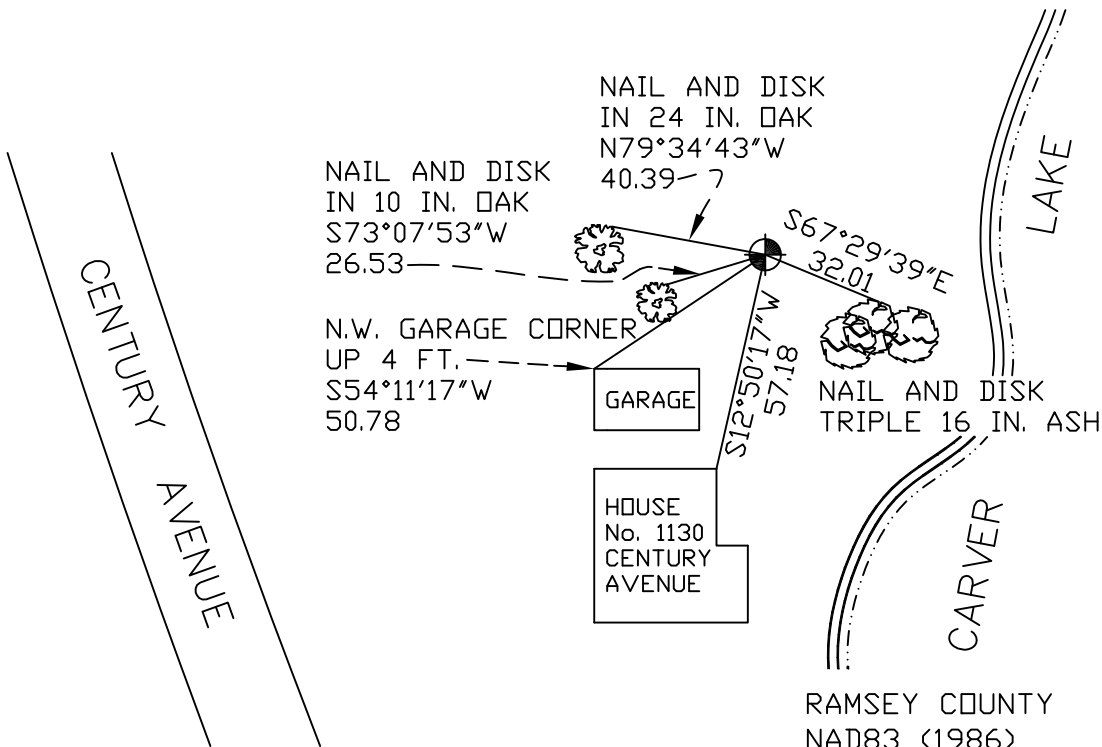
At the corner location shown on the sketch

On July 17, 2007 found a cast iron monument.

left monument as found lowered monument removed monument (explain)

On _____ placed a _____

SKETCH OF REFERENCE TIES



RAMSEY COUNTY
NAD83 (1986)

MONUMENT 739N

ALL DISTANCES ARE SHOWN IN U.S. SURVEY FEET.
BEARINGS ARE FOR TIE REFERENCE PURPOSES ONLY.

X= 603381.936 (Easting)
Y= 142731.738 (Northing)

Statements of evidence relative to this corner are on the following page(s).

I hereby certify that this document and the data contained herein was prepared by me or under my direct supervision this _____ day of _____, 20____.

SIGNATURE

Minnesota License No. _____

- County Surveyor
 Deputy County Surveyor Land Surveyor

OFFICE OF COUNTY SURVEYOR

County of Ramsey

I hereby certify that this document was filed in the County Surveyor's office on the ____ day of _____, 20____.

David D. Claypool, P.L.S., County Surveyor

By _____, Deputy

MONUMENT 739N

Found a granite monument down 0.3 ft. and retied, August 6, 1974.

Monument destroyed by sewer construction; placed a witness corner, October 27, 1977.

Set a cast iron monument; no date given in field book.

Retied monument, October 8, 1984.

Replaced monument after sewer service construction and retied, May 2, 1989.

Retied monument, down 4 in. in flower bed, April 18, 2001.

Retied monument, July 17, 2007.