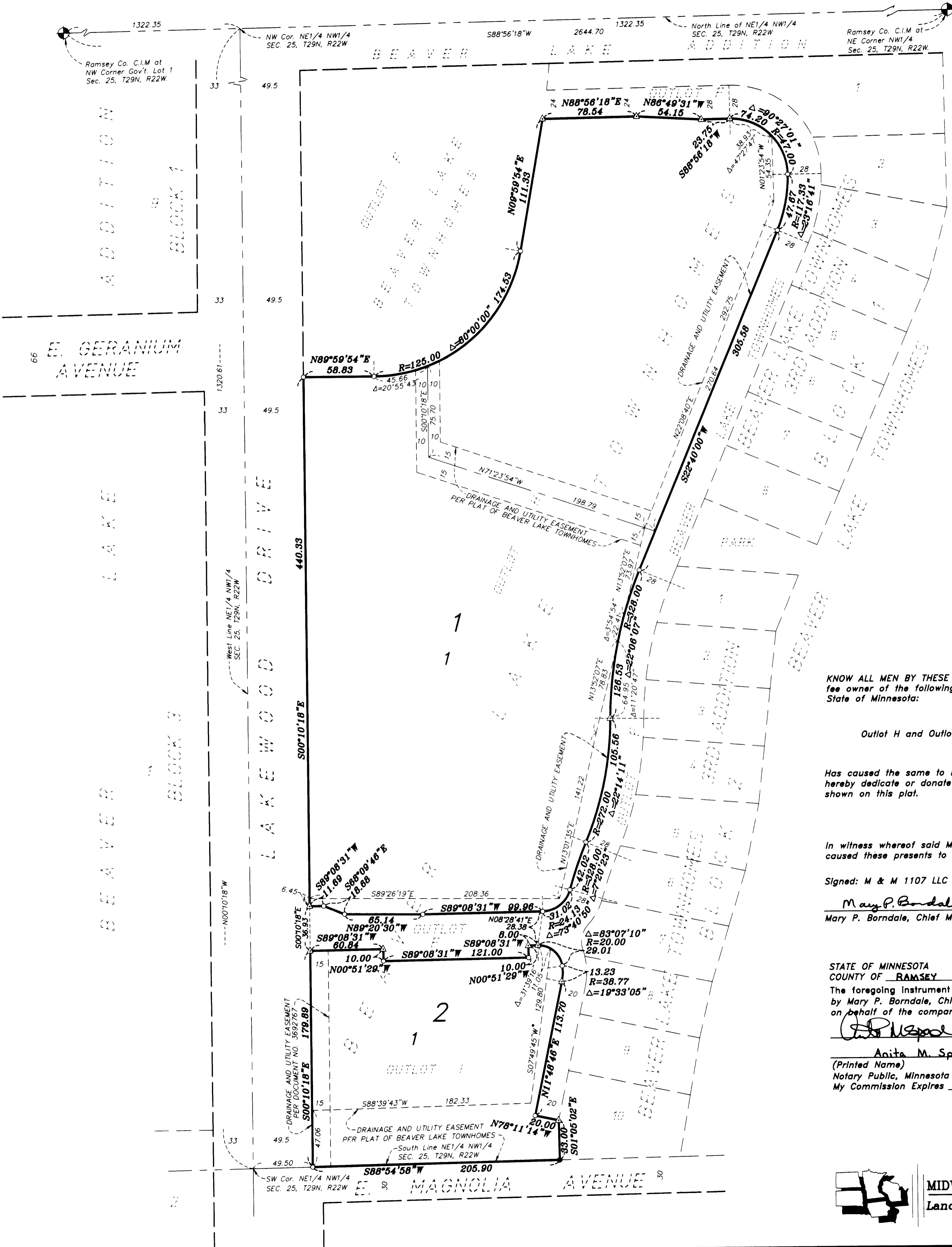


# BEAVER LAKE TOWNHOMES 4TH ADDITION



SCALE: 1 INCH = 50 FEET  
 0 50 100  
 GRAPHIC SCALE IN FEET

ORIENTATION OF THIS BEARING SYSTEM IS  
 BASED UPON RAMSEY COUNTY COORDINATES,  
 NORTH AMERICAN DATUM OF 1983.

- DENOTES 1/2 INCH DIA. X 14 INCHES IN LENGTH IRON PIPE MONUMENT FOUND, MARKED WITH A PLASTIC CAP INSCRIBED "RLS 10947".
- DENOTES 1/2 INCH DIA. X 14 INCHES IN LENGTH IRON PIPE MONUMENT SET AND MARKED WITH A PLASTIC CAP INSCRIBED "RIVARD RLS 19421".
- △ DENOTES PK NAIL SET IN CONCRETE
- ⊕ DENOTES RAMSEY COUNTY CAST IRON MONUMENT FOUND

KNOW ALL MEN BY THESE PRESENTS: That M & M 1107 LLC, a Minnesota Limited Liability Company, fee owner of the following described property situated in the City of Maplewood, County of Ramsey, State of Minnesota:

Outlot H and Outlot I, BEAVER LAKE TOWNHOMES, Ramsey County, Minnesota.

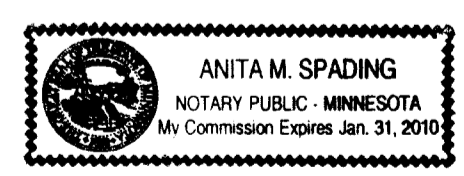
Has caused the same to be surveyed and platted as BEAVER LAKE TOWNHOMES 4TH ADDITION and does hereby dedicate or donate to the public for public use forever the drainage and utility easements as shown on this plat.

In witness whereof said M & M 1107 LLC, a Minnesota Limited Liability Company, has caused these presents to be signed by its proper officer this 24<sup>th</sup> day of January, 2008.

Signed: M & M 1107 LLC  
 Mary P. Bordale, Chief Manager

STATE OF MINNESOTA  
 COUNTY OF RAMSEY  
 The foregoing instrument was acknowledged before me this 24<sup>th</sup> day of January, 2008, by Mary P. Bordale, Chief Manager of M & M 1107 LLC, a Minnesota Limited Liability Company, on behalf of the company.

Anita M. Spading  
 (Printed Name)  
 Notary Public, Minnesota  
 My Commission Expires Jan. 31, 2010



**MIDWEST**  
 Land Surveyors & Civil Engineers, Inc.

I, Blake L. Rivard, Professional Land Surveyor, do hereby certify that I have surveyed or directly supervised the survey of the property described on this plat; prepared this plat or directly supervised the preparation of this plat; that this plat is a correct representation of the boundary survey; that all mathematical data and labels are correctly designated on this plat; that all monuments depicted on this plat have been correctly set; that all water boundaries and wet lands, as defined in Minnesota Statutes, Section 505.01, Subd. 3, as of the date of the surveyor's certification are shown and labeled on this plat; and all public ways are shown and labeled on this plat.

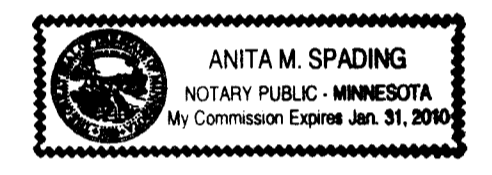
Dated this 24<sup>th</sup> day of January, 2008.

Blake L. Rivard, Land Surveyor  
 Minnesota License No. 19421

STATE OF MINNESOTA  
 COUNTY OF ANOKA

The foregoing Surveyor's Certificate was acknowledged before me this 24<sup>th</sup> day of January, 2008, by Blake L. Rivard, a Licensed Land Surveyor.

Anita M. Spading  
 (Printed Name)  
 Notary Public, Minnesota  
 My Commission Expires Jan. 31, 2010



City of Maplewood  
 We do hereby certify that on the 24<sup>th</sup> day of March, 2008, the City Council of the City of Maplewood, Minnesota, approved this plat. Also, the conditions of Minnesota Statutes, Section 505.03, Subd. 2, have been fulfilled.

Diana Argue, Mayor  
 Karol E. Canale, Clerk

Department of Property Records and Revenue  
 Pursuant to Minnesota Statutes, Section 505.021, Subd. 9, taxes payable in the year 2008 on the land hereinbefore described have been paid. Also, pursuant to Minnesota Statutes, Section 272.12, there are no delinquent taxes and transfer entered this 21<sup>st</sup> day of April, 2008.

Mark Oswald, Director  
 Department of Property Records and Revenue  
 By Debra Stone, Deputy

County Surveyor  
 I hereby certify that this plat complies with the requirements of Minnesota Statutes, Section 505.021, and is approved pursuant to Minnesota Statutes, Section 383A.42, this 24<sup>th</sup> day of April, 2008.

David D. Claypool, P.L.S.  
 Ramsey County Surveyor

County Recorder, County of Ramsey, State of Minnesota  
 I hereby certify that this plat of BEAVER LAKE TOWNHOMES 4TH ADDITION was filed in the office of the County Recorder for public record on this 22<sup>nd</sup> day of April, 2008, at 4 o'clock P.M. and was duly filed in Book 123 of Plats, Page 33, as Document Number A092471.

Jane L. Carroll  
 Deputy County Recorder