

BONTEN ADDITION

KNOW ALL PERSONS BY THESE PRESENTS: That Bonten Limited Partnership, a Minnesota limited partnership, owner, and Bonten II, LLC, a Minnesota limited liability company, owner, and City of Roseville, a Minnesota municipal corporation, owner of the following described property situated in the City of Roseville, County of Ramsey, State of Minnesota:

That part of the Northeast Quarter of the Southwest Quarter of Section 8, Township 29 North, Range 23 West, Ramsey County, Minnesota described as follows:

Beginning at the northeast corner of said Northeast Quarter of the Southwest Quarter; thence South 00 degrees 36 minutes 13 seconds East, assumed bearing, along the east line of said Northeast Quarter of the Southwest Quarter, 928.01 feet to the north line of Minnesota State Trunk Highway 36; thence westerly 154.78 feet along a non-tangential curve along said north line, concave to the south having a radius of 5794.58 feet, a central angle of 01 degree 31 minutes 50 seconds, and having a chord bearing of South 88 degrees 28 minutes 06 seconds West; thence South 87 degrees 42 minutes 11 seconds West, tangent to last described curve, along said north line, 508.20 feet to the centerline of St. Croix Street as described in Book 1375 of Deeds, Page 173 of Ramsey County Records; thence North 00 degree 37 minutes 13 seconds West, along said centerline 76.75 feet; thence North 18 degrees 21 minutes 13 seconds West, along said centerline 310.95 feet; thence North 58 degrees 21 minutes 13 seconds West, 50.00 feet; thence North 15 degrees 24 minutes 13 seconds West, 293.67 feet to the southeasterly right of way line of St. Croix Falls Improvement Company, said right of way line lying 50.00 feet southeasterly of and parallel with the southeasterly right of way line of Minnesota Transfer Company Railroad; thence northeasterly 316.04 feet along said southeasterly right of way line of St. Croix Falls Improvement Company, along a non-tangential curve concave to the northwest, having a radius of 3919.83 feet, a central angle of 04 degrees 37 minutes 10 seconds, and having a chord bearing of North 31 degrees 39 minutes 31 seconds East to the north line of said Northeast Quarter of the Southwest Quarter; thence North 89 degrees 48 minutes 49 seconds East, along said north line, 706.22 feet to the point of beginning, except the North 290.00 feet of the East 297.00 feet thereof.

Have caused the same to be surveyed and platted as BONTEN ADDITION, and do hereby donate and dedicate to the public for public use forever the public ways and the drainage and utility easements as shown on this plat.

In witness whereof said Bonten Limited Partnership, a Minnesota limited partnership, has caused these presents to be signed by its proper partner this 21st day of December, 2007, and in witness whereof said Bonten II, LLC, a Minnesota limited liability company, has caused these presents to be signed by its proper officer this 21st day of December, 2007, and in witness whereof said City of Roseville, a Minnesota municipal corporation, has caused these presents to be signed by its proper officers this 28th day of April, 2008.

Signed: BONTEN LIMITED PARTNERSHIP
By: B.R.A. Management, Inc., a Minnesota corporation, General Partner

David A. Bonestroo
David A. Bonestroo, President

Signed: BONTEN II, LLC

David A. Bonestroo
David A. Bonestroo, Chief Manager

Signed: CITY OF ROSEVILLE, MINNESOTA

Craig D. Klausung
Craig D. Klausung, Mayor
William J. Malinen
William J. Malinen, Manager

STATE OF MINNESOTA
COUNTY OF Ramsey

The foregoing instrument was acknowledged before me this 21st day of December, 2007, by David A. Bonestroo, President of B.R.A. Management, Inc., a Minnesota corporation, General Partner of Bonten Limited Partnership, a Minnesota limited partnership, on behalf of the partnership.

Patricia J. Wegener
(Signature)
Patricia J. Wegener
(Name Printed)

Notary Public, Ramsey County, Minnesota
My Commission Expires 1/31/2010

STATE OF MINNESOTA
COUNTY OF Ramsey

The foregoing instrument was acknowledged before me this 21st day of December, 2007, by David A. Bonestroo, Chief Manager of Bonten II, LLC, a Minnesota limited liability company, on behalf of the company.

Patricia J. Wegener
(Signature)
Patricia J. Wegener
(Name Printed)

Notary Public, Ramsey County, Minnesota
My Commission Expires 1/31/2010

STATE OF MINNESOTA
COUNTY OF Ramsey

The foregoing instrument was acknowledged before me this 28th day of April, 2008, by Craig D. Klausung, Mayor, and William J. Malinen, Manager of the City of Roseville, a Minnesota municipal corporation, on behalf of the corporation.

Margaret H. Driscoll
(Signature)
Margaret H. Driscoll
(Name Printed)

Notary Public, Ramsey County, Minnesota
My Commission Expires 1/31/2010

I, Daniel J. Roeber, Professional Land Surveyor, do hereby certify that I have surveyed or directly supervised the survey of the property described on this plat; prepared this plat or directly supervised the preparation of this plat; that this plat is a correct representation of the boundary survey; that all mathematical data and labels are correctly designated on this plat; that all monuments depicted on this plat have been correctly set; that all water boundaries and wet lands, as defined in Minnesota Statutes, Section 505.01, Subd. 3, as of the date of the surveyor's certification are shown and labeled on this plat; and all public ways are shown and labeled on this plat.

Dated this 21st day of December, 2007.

Daniel J. Roeber
Daniel J. Roeber, Professional Land Surveyor
Minnesota License No. 43133

STATE OF MINNESOTA
COUNTY OF Ramsey

The foregoing Surveyor's Certificate was acknowledged before me this 21st day of December, 2007, by Daniel J. Roeber, a Professional Land Surveyor.

Patricia J. Wegener
(Signature)
Patricia J. Wegener
(Name Printed)

Notary Public, Minnesota
My Commission Expires 1/31/2010

CITY OF ROSEVILLE

We do hereby certify that on the 24th day of March, 2008, the City Council of the City of Roseville, Minnesota, approved this plat. Also, the conditions of Minnesota Statutes, Section 505.03, Subd. 2, have been fulfilled.

Signed Craig D. Klausung, Mayor Attest WJ Malinen, Manager

DEPARTMENT OF PROPERTY RECORDS AND REVENUE

Pursuant to Minnesota Statutes, Section 505.021, Subd. 9, taxes payable in the year 2008, on the land hereinbefore described have been paid. Also, pursuant to Minnesota Statutes, Section 272.12, there are no delinquent taxes and transfer entered this 20th day of June, 2008.

Mark Oswood, Director
Department of Property Records and Revenue
By Mary Kay Jumper, Deputy

COUNTY SURVEYOR

I hereby certify that this plat complies with the requirements of Minnesota Statutes Section 505.021, and is approved pursuant to Minnesota Statutes, Section 383A.42, this 24th day of June, 2008.

David D. Claypool
David D. Claypool, P.L.S.
Ramsey County Surveyor

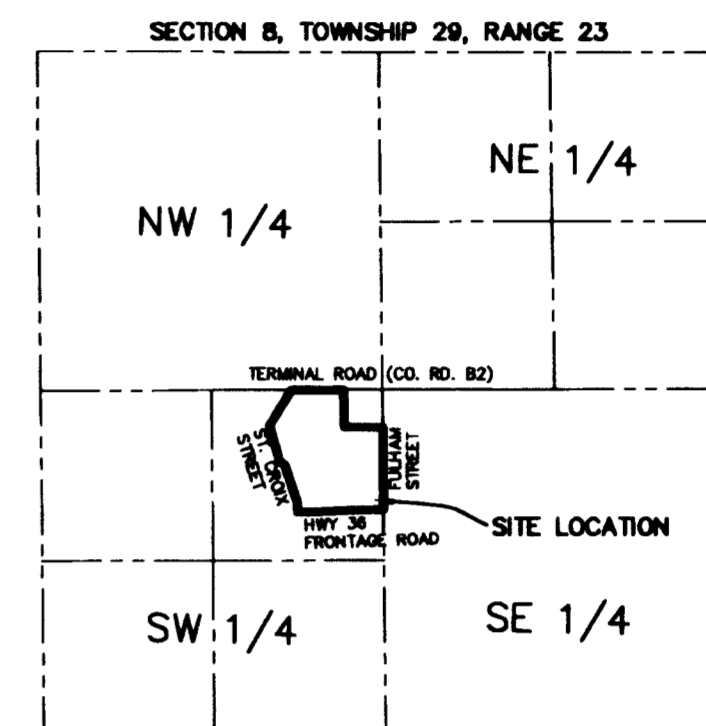
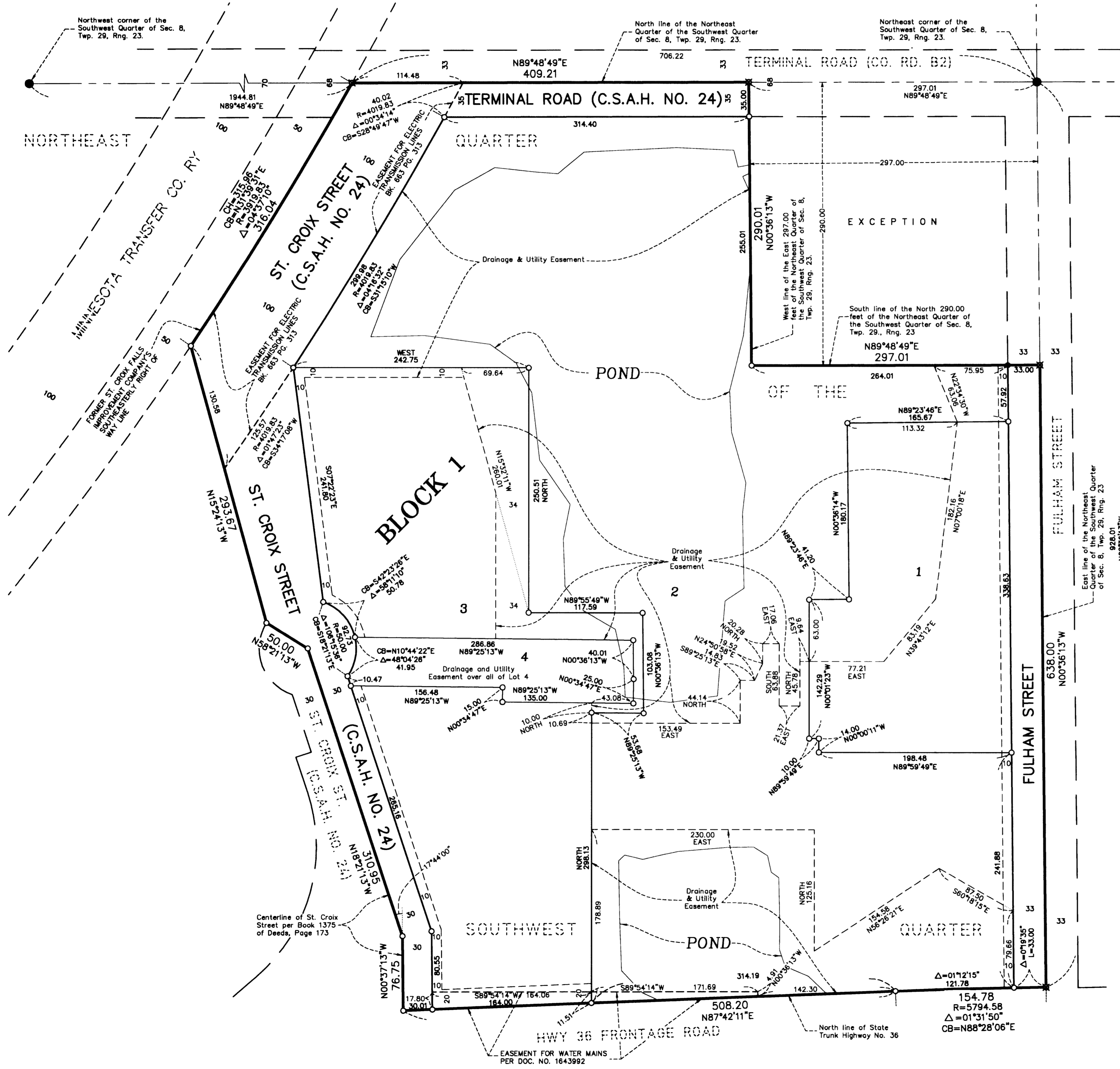
COUNTY RECORDER, COUNTY OF RAMSEY, STATE OF MINNESOTA

I hereby certify that this plat of BONTEN ADDITION was filed in the office of the County Recorder for public record on this 25th day of June, 2008, at 8:00 o'clock A.M., and was duly filed in Book 123 of Plats, Pages 41 and 42, as Document Number 4103691.

James W. Carroll
Deputy County Recorder



BONTEN ADDITION



LOCATION MAP

DRAINAGE AND UTILITY EASEMENTS ARE SHOWN THUS: (NO SCALE)

10' ——— 10'

Being 10 feet in width and adjoining public ways unless otherwise indicated on this plat.

- ⊙ Denotes Ramsey County Cast Iron Monument
- Denotes 1/2 iron pipe monument found, open
- Denotes 1/2 inch by 14 inch iron pipe monument set and marked with license number 43133
- ✕ Denotes PK nail set
- Denotes water boundary line

ORIENTATION OF THIS PLAT IS BASED UPON THE EAST LINE OF THE S.W. 1/4, SEC. 8, T. 29 N., R. 23 W. WHICH IS ASSIGNED A BEARING OF NORTH 00°36'31" WEST.

