

# COMMON INTEREST COMMUNITY NUMBER 572 CONDOMINIUM 674 VAN BUREN AVENUE CONDOMINIUM COMMON INTEREST COMMUNITY PLAT

This Common Interest Community Plat is part of the Declaration recorded as Document No. 4122627 on this 21<sup>st</sup> day of OCTOBER, 2008

James W. Canall  
Deputy County Recorder

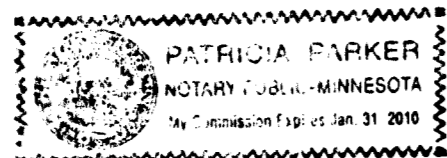
I, James H. Parker, do hereby certify that the work was undertaken by or reviewed and approved by me for this Common Interest Community Plat of COMMON INTEREST COMMUNITY NUMBER 572, a condominium, 674 VAN BUREN AVENUE CONDOMINIUM, being located upon:

The West 15 feet of Lot 14 and all of Lot 15, Dale Street Addition, Ramsey County, Minnesota,

fully and accurately depicts all information required by Minnesota Statutes, Section 515B.2-110, (c), subsections (1), (2), (3), (4), (5), (6), (7), (10), and (11).

Dated this 18<sup>th</sup> day of July, 2008

James H. Parker  
James H. Parker, Land Surveyor  
Minnesota License Number 9235



STATE OF MINNESOTA  
COUNTY OF HENNEPIN  
The foregoing instrument was acknowledged before me this 18<sup>th</sup> day of July, 2008 by James H. Parker, Land Surveyor.

Patricia Parker  
Notary Public, Hennepin County, Minnesota  
My Commission Expires January 31, 2010

BENCH MARK:  
TOP OF MANHOLE  
SE CORNER OF VAN BUREN  
AVE. AND ST. ALBANS ST.  
ELEVATION=870.7 FEET  
(N.G.V.D. 1929)

88 VAN BUREN AVE. 88

I, Thomas L. Obermeyer, do hereby certify that the work was undertaken by or reviewed and approved by me for this Common Interest Community Plat of COMMON INTEREST COMMUNITY NUMBER 572, a condominium, 674 VAN BUREN AVENUE CONDOMINIUM, as described herein, fully and accurately depicts all information required by Minnesota Statutes, Section 515B.2-110, (c), subsections (8), (9), and (12).

Dated this 18<sup>th</sup> day of July, 2008.

Thomas L. Obermeyer  
Thomas L. Obermeyer, Licensed Architect  
Minnesota License Number 11733

I, Thomas L. Obermeyer, pursuant to Minnesota Statutes, Section 515B.2-101(c), do hereby certify that the structural components of the structures containing the units and the mechanical systems serving more than one unit are substantially completed.

Dated this 18<sup>th</sup> day of July, 2008.

Thomas L. Obermeyer  
Thomas L. Obermeyer, Licensed Architect  
Minnesota License Number 11733

STATE OF MINNESOTA  
COUNTY OF HENNEPIN  
The foregoing instruments were acknowledged before me this 18<sup>th</sup> day of July, 2008 by Thomas L. Obermeyer, a Licensed Architect.

Patricia Parker  
Notary Public, Hennepin County, Minnesota  
My Commission Expires January 31, 2010

Pursuant to Minnesota Statutes, Section 515B.1-116 and Section 272.12, taxes payable in the year 2008 on real estate hereinbefore described, have been paid; there are no delinquent taxes and transfer entered, on this 21<sup>st</sup> day of OCTOBER, 2008.

Mark E. Oswald, Director  
Property Records and Revenue

By Denise Long, Deputy

Pursuant to Minnesota Statutes, Section 389.09, Subd. 2, this Common Interest Community Plat has been reviewed and is approved this 21<sup>st</sup> day of OCTOBER, 2008.

David D. Claypool  
David D. Claypool, P.L.S.  
Ramsey County Surveyor

THIS COMMON INTEREST COMMUNITY IS  
LOCATED IN THE NE 1/4 OF SEC. 35,  
TWP. 29, RGE. 23.

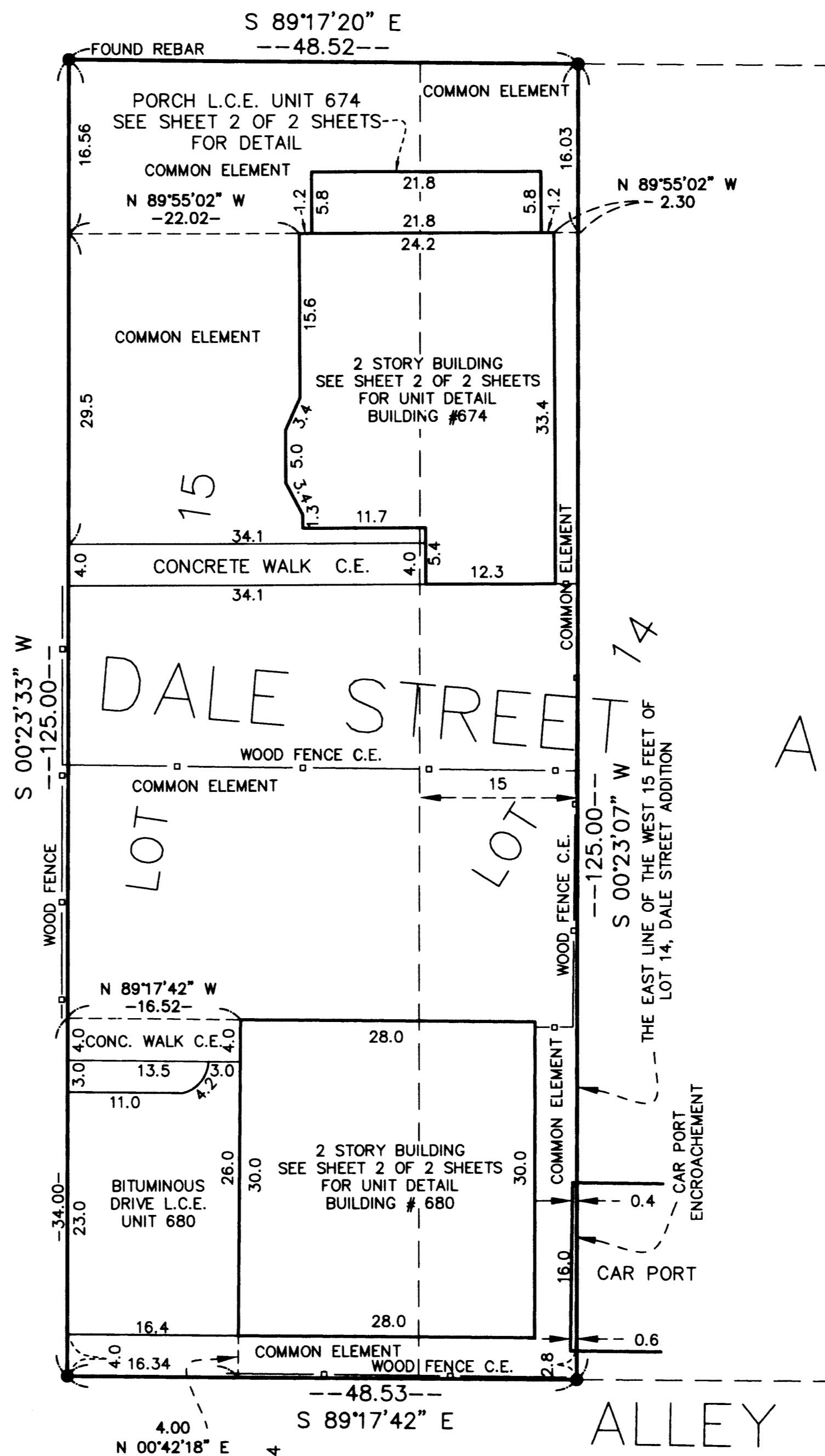
L.C.E.=LIMITED COMMON ELEMENT.  
C.E.=COMMON ELEMENT.

• DENOTES 1/2 INCH CAPPED IRON PIPE  
MONUMENT BEARING LICENSE NO. 9235  
FOUND, UNLESS OTHERWISE NOTED.

ORIENTATION OF THIS BEARING SYSTEM  
IS BASED ON THE WEST LINE OF LOT 15,  
DALE STREET ADDITION, HAVING AN  
ASSUMED BEARING OF S 00°23'33" W.

## SITE PLAN

60 ST. ALBANS STREET



ADDITION

