

DARMER ADDITION

THE NE CORNER OF SE 1/4 SEC. 11, T. 28, R.22 RAMSEY CO CIM

KNOW ALL MEN BY THESE PRESENTS: That Steven D. Darmer and Jinhee Darmer, husband and wife, owners and Wells Fargo Home Mortgage, a national banking corporation, mortgagee of the following described property situated in the City of Saint Paul, County of Ramsey, State of Minnesota:

The South 80 feet of the East 260 feet of the East Half of the North Half of the South Half of the Northeast Quarter of the Southeast Quarter of Section 11, Township 28, Range 22.

And that Stephen D. Bauer and Kathleen E. Bauer, husband and wife, owners, and I.B.E.W. 110 Credit Union No. 200, a national banking corporation, mortgagee, of the following described property situated in the City of Saint Paul, County of Ramsey, State of Minnesota:

The South 160 feet of the East Half of the North Half of the South Half of the Northeast Quarter of the Southeast Quarter, except the South 80 feet of the East 260 feet thereof, of Section 11, Township 28, Range 22.

Have caused the same to be surveyed and platted as DARMER ADDITION and do hereby dedicate to the public for public use forever the thoroughfare and the drainage and utility easement as shown on this plat.

In witness whereof said Steven A. Darmer and Jinhee Darmer, Bank assoc. husband and wife, have hereunto set their hands this 27 day of Dec 2003; and said Wells Fargo Home Mortgage, a national banking corporation, has caused these presents to be signed by its proper officers this 13th day of March, 2006; and said Stephen D. Bauer and Kathleen E. Bauer, husband and wife, have hereunto set their hands this 20th day of Sept, 2005; and said I.B.E.W. 110 Credit Union No. 200, a national banking corporation has caused these presents to be signed by its proper officers this 20th day of Sept, 2005

Mortgage Consent:

Steven D. Darmer, Jinhee Darmer, Bank assoc. husband and wife, have hereunto set their hands this 27 day of Dec 2003; and said Wells Fargo Home Mortgage, a national banking corporation, has caused these presents to be signed by its proper officers this 13th day of March, 2006; and said Stephen D. Bauer and Kathleen E. Bauer, husband and wife, have hereunto set their hands this 20th day of Sept, 2005; and said I.B.E.W. 110 Credit Union No. 200, a national banking corporation has caused these presents to be signed by its proper officers this 20th day of Sept, 2005

Wells Fargo Bank N.A. S/B/M
Said: Wells Fargo Home Mortgage, Inc. its V.P. *Wells Fargo Bank N.A. S/B/M* its Asst. Sec.

Stephen D. Bauer Kathleen E. Bauer
Said: I.B.E.W. 110 Credit Union No. 200 its President *Stephen D. Bauer Kathleen E. Bauer* its Asst. Mgr.

STATE OF MINNESOTA COUNTY OF Ramsey The foregoing instrument was acknowledged before me this 27 day of Dec, 2003, by Steven D. Darmer and Jinhee Darmer, husband and wife.

CYNTHIA J. FRESONKE Notary Public Ramsey County, Minnesota My Commission Expires Jan 31, 2008

STATE OF MINNESOTA COUNTY OF Ramsey The foregoing instrument was acknowledged before me this 14th day of March, 2006 by *Loana R. Slaughter* and *Catherine Coupar* ASST. SEC. of Wells Fargo Home Mortgage, a national banking corporation, on behalf of the corporation, Assoc. Bank N.A.

Loana R. Slaughter Catherine Coupar
Notary Public Ramsey County, Minnesota My Commission Expires 12/2008

STATE OF MINNESOTA COUNTY OF Ramsey The foregoing instrument was acknowledged before me this 20 day of 9, 2005 by Stephen D. Bauer and Kathleen E. Bauer, husband and wife.

Notary Public Ramsey County, Minnesota My Commission Expires JAN 31, 2010

STATE OF MINNESOTA COUNTY OF Ramsey The foregoing instrument was acknowledged before me this 20 day of 9, 2005 by I.B.E.W. 110 Credit Union No. 200, a national banking corporation, on behalf of the corporation.

Notary Public Ramsey County, Minnesota My Commission Expires JAN 31, 2010

I hereby certify that I have surveyed and platted the property described on this plat as DARMER ADDITION; that this plat is a correct representation of the survey; that all distances are correctly shown on the plat in feet and hundredths of a foot; that all monuments have been correctly placed in the ground as shown; that the outside boundary lines are correctly designated on the plat; and there are no wet lands as defined in Minnesota Statutes, Section 505.02, Subd. 1, or public highways to be designated other than as shown on this plat.

STATE OF MINNESOTA COUNTY OF HENNEPIN The foregoing Surveyor's Certificate was acknowledged before me this 26th day of Dec., 2003 by Frank R. Cardarelle, a Licensed Land Surveyor.

Frank R. Cardarelle, Licensed Land Surveyor Minnesota License No. 6508

Mari C. Wittberg
Notary Public, Hennepin County, Minnesota My Commission Expires

CITY OF SAINT PAUL, MINNESOTA I do hereby certify that on the 20 day of November 2002 the City Council of the City of Saint Paul, Minnesota, approved this plat. All monuments will be set as specified by the City Council and as stated on this plat, according to Minnesota Statutes, Section 505.02, Subd. 1.

Shari Moore, Clerk

Taxes payable in the year 2006 on the land herein described have been paid, also there are no delinquent taxes and transfer entered this 31st day of October, 2006

Dorothy McClung, Director Department of Property Taxation

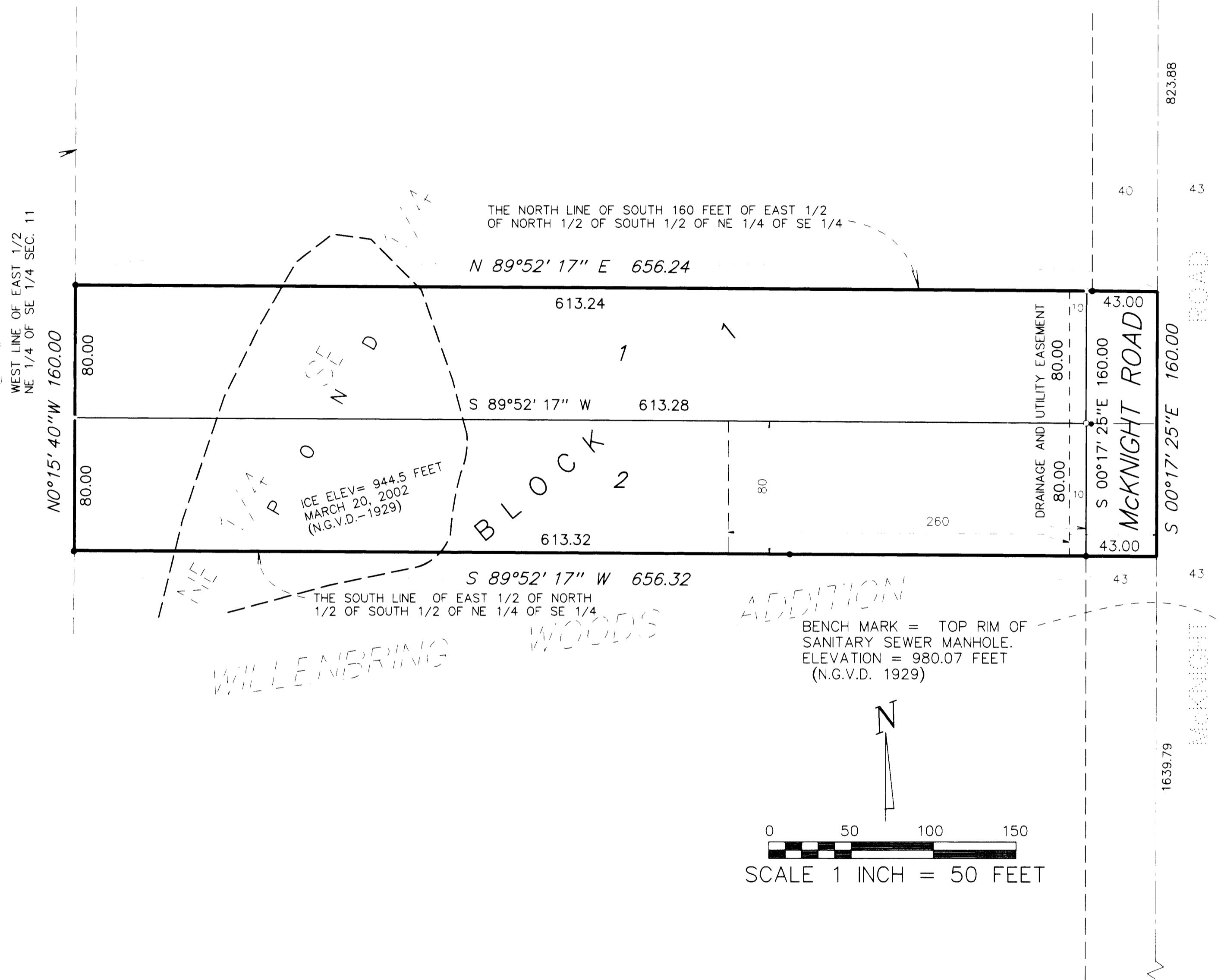
By *[Signature]*, Deputy

Pursuant to Minnesota Statutes, Section 383A.42, this plat has been examined and is approved this 6th day of October 2006, and the conditions of Minnesota Statutes, Section 505.03, Subdivision 2, have been fulfilled.

David D. Claypool, S Ramsey County Surveyor

COUNTY RECORDER, COUNTY OF RAMSEY, STATE OF MINNESOTA I hereby certify that this plat of DARMER ADDITION was filed in the office of the County Recorder for public record on this 6th day of November, 2006, at 4:00 o'clock P.M. and was duly filed in Book 122 of Plats, Page 30, as Document Number 3989429.

Christopher & Conrad
Deputy County Recorder



- o DENOTES 1/2 INCH BY 14 INCH IRON PIPE MONUMENT SET MARKED BY LICENSE NO. 6508
 - DENOTES 1/2 INCH IRON PIPE MONUMENT FOUND
- FOR PURPOSES OF THIS PLAT THE EAST LINE OF THE SE 1/4 SECTION 11, T. 28, R. 22 IS ASSUMED TO HAVE A BEARING OF 'S 00°17' 25" E

Frank R. Cardarelle Land Surveyor