

# HAZEL GARDENS

KNOW ALL MEN BY THESE PRESENTS: That Riverstone Development Group, LLC, a Minnesota limited liability company, owner, and Bremer Bank, a national banking association, mortgagee, of the following described property situated in the City of Saint Paul, County of Ramsey, State of Minnesota:

Lot 2, Block 6, HUDSON ROAD GARDENS, Ramsey County, Minnesota.

Have caused the same to be surveyed and platted as HAZEL GARDENS; and do hereby dedicate to the public for public use forever the drainage and utility easements as shown on this plat.

In witness whereof said Riverstone Development Group, LLC, a Minnesota limited liability company, has caused these presents to be signed by its proper officer this 13 day of July, 2006

Signed: Riverstone Development Group, LLC

David Amalick, Chief Manager

STATE OF MINNESOTA  
COUNTY OF Ramsey

The foregoing instrument was acknowledged before me this 13 day of July, 2006 by David Amalick the Chief Manager of Riverstone Development Group, LLC, a Minnesota limited liability company, on behalf of the company.

Sara Smith  
Notary Public, Washington County, Minnesota  
My Commission Expires 01-31-2011



In witness whereof said Bremer Bank, a national banking association, has caused these presents to be signed by its proper officer this 14th day of July, 2006

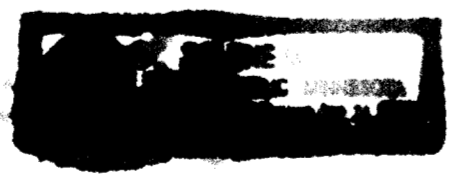
Signed: Bremer Bank

Patrick J. Laner, its Vice President

STATE OF MINNESOTA  
COUNTY OF Washington

The foregoing instrument was acknowledged before me this 14th day of July, 2006 by Patrick J. Laner, the Vice President of Bremer Bank, a national banking association, on behalf of the association.

Jelene M. Hall  
Notary Public, Washington County, Minnesota  
My Commission Expires 1-31-2010



I, Thomas E. Hodorff, hereby certify that I have surveyed and platted the property described on this plat as HAZEL GARDENS; that this plat is a correct representation of the survey; that all distances are correctly shown on this plat in feet and hundredths of a foot; that all monuments have been correctly placed in the ground as shown; that the outside boundary lines are correctly designated on this plat; and there are no wet lands as defined in Minnesota Statutes, Section 505.02, Subd. 1, or public highways to be designated other than as shown on this plat.

Thomas E. Hodorff  
Thomas E. Hodorff, Professional Land Surveyor.  
Minnesota License No. 23677

STATE OF MINNESOTA  
COUNTY OF HENNEPIN

The foregoing Surveyor's Certificate was acknowledged before me this 13th day of July, 2006 by Thomas E. Hodorff, a Licensed Land Surveyor.

Darren Douglas James  
Notary Public, Hennepin County, Minnesota  
My Commission Expires 1/31/2009



City of Saint Paul

I do hereby certify that on the 19 day of July, 2006 the City Council of the City of Saint Paul, Minnesota, approved this plat. Pursuant to Minnesota Statutes, Section 505.02, Subd. 1, all monuments must be set as specified by the City Council and as stated and shown on this plat. Also, the conditions of Minnesota Statutes, Section 505.03, Subd. 2, have been fulfilled.

Shari Moore, City Clerk

Department of Property Records and Revenue

Taxes payable in the year 2006 on the land herein described have been paid, also there are no delinquent taxes and transfer entered this 20th day of July, 2006.

Kathleen McClung, Director  
Property Records and Revenue  
By Debbie Kernig, Deputy

County Surveyor

Pursuant to Minnesota Statutes, Section 383A.42, this plat is approved this 21st day of July, 2006

David D. Claypool  
David D. Claypool, P.L.S.  
Ramsey County Surveyor

Registrar of Titles, County of Ramsey, State of Minnesota

I hereby certify that this plat of HAZEL GARDENS was filed in the office of the Registrar of Titles for public record on this 21st day of JULY, 2006, at 4:00 o'clock P.M. and was duly filed in Book 46 of Plats, Pages 48 and 49, as Document Number 1981746

Chris Taylor S. Conrad  
Deputy Registrar of Titles

# HAZEL GARDENS

CAST IRON MONUMENT  
WEST QUARTER CORNER OF  
SECTION 35, TOWNSHIP 29, RANGE 22

N 0°31'22" E 2615.76  
1930.54  
S 0°31'22" W

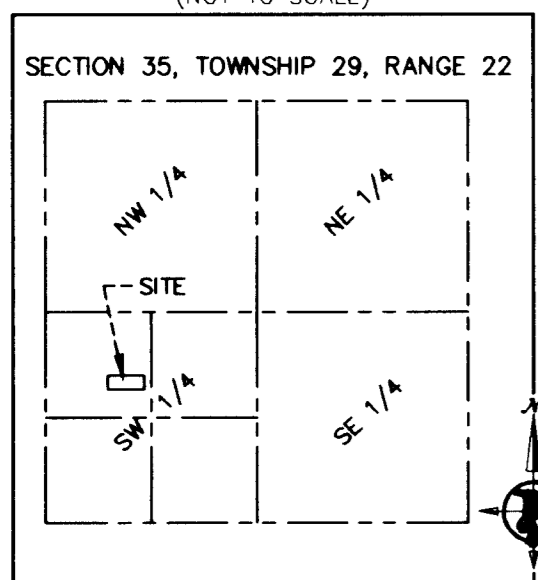
N 89°01'46" W 1278.01

NORTHEAST CORNER LOT 1,  
BLOCK 6, HUDSON ROAD GARDENS

120.00  
N 0°28'35" E

CAST IRON MONUMENT  
SOUTHWEST CORNER OF  
SECTION 35, TOWNSHIP 29, RANGE 22

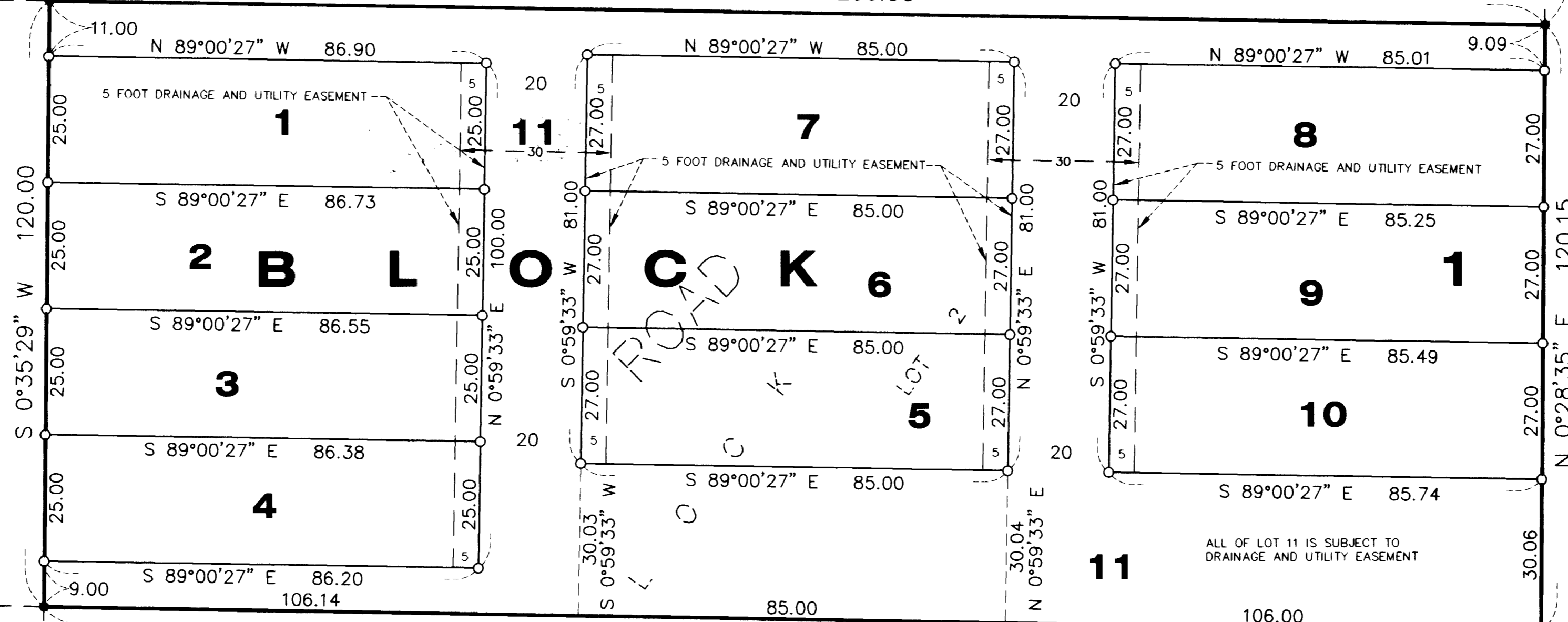
VICINITY MAP  
(NOT TO SCALE)



HUDSON

LOT 1

N 89°01'46" W 296.90



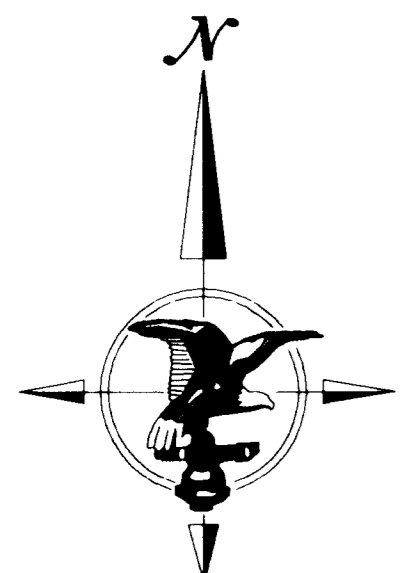
60

HAZEL STREET NORTH

HUDSON ROAD GARDENS

60

GARDENS



SCALE IN FEET

SCALE: 1 INCH = 20 FEET

○ DENOTES 1/2 INCH BY 14 INCH IRON PIPE  
MONUMENT SET AND MARKED BY MINNESOTA  
LICENSE NUMBER 23677.

● DENOTES 1/2 INCH BY 14 INCH IRON PIPE  
MONUMENT FOUND AND MARKED BY MINNESOTA  
LICENSE NUMBER 23677.

FOR PURPOSES OF THIS PLAT, THE SOUTH LINE OF  
LOT 2, BLOCK 6, HUDSON ROAD GARDENS IS  
ASSUMED TO HAVE A BEARING OF S 89°00'02" E.