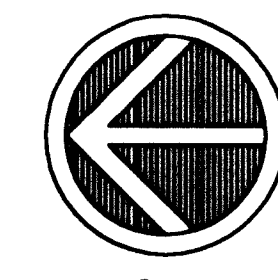
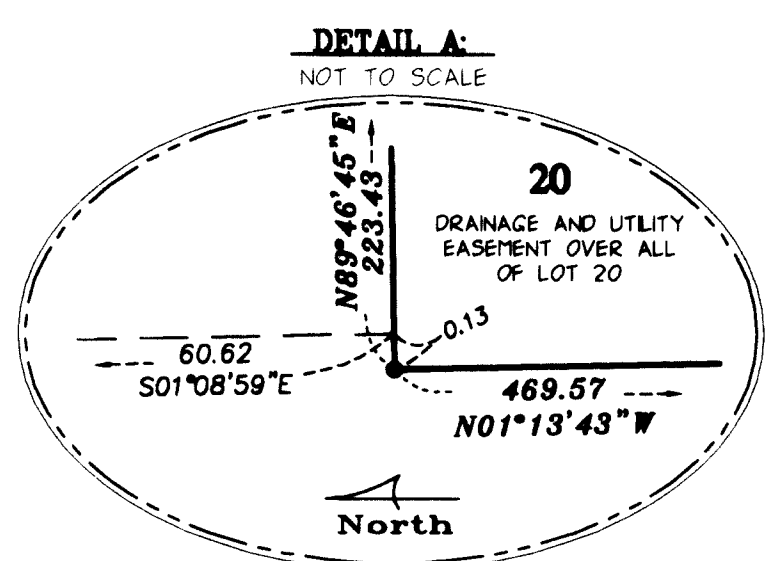
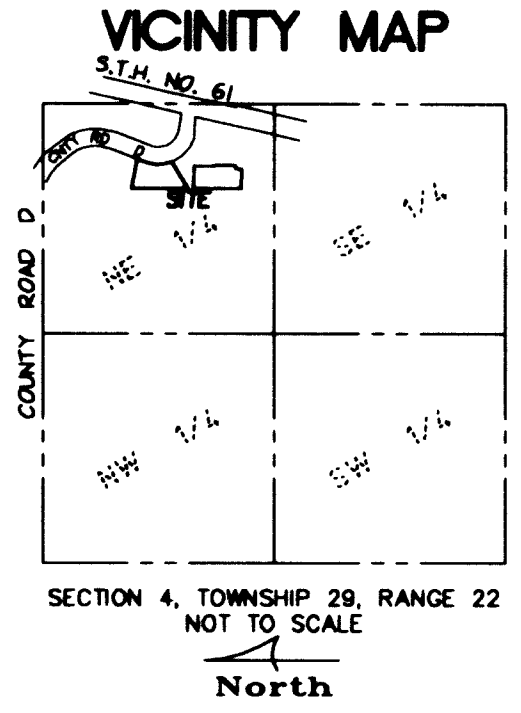


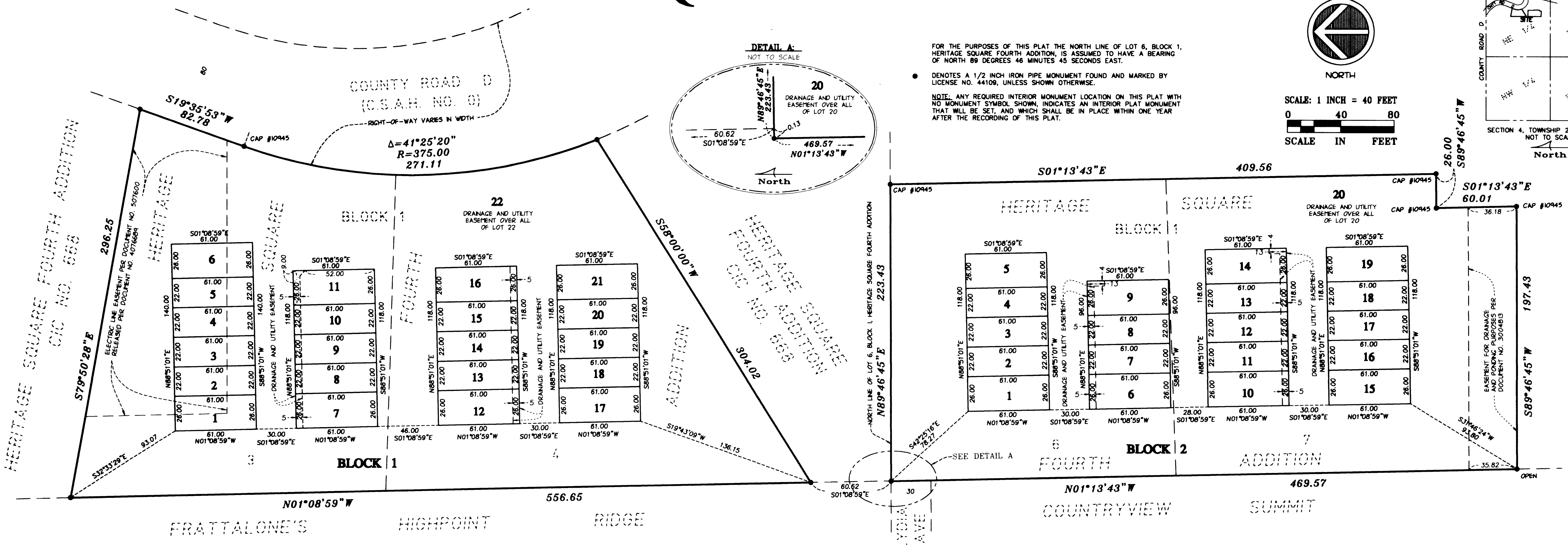
# HERITAGE SQUARE FIFTH ADDITION



SCALE: 1 INCH = 40 FEET  
0 40 80  
SCALE IN FEET



FOR THE PURPOSES OF THIS PLAT THE NORTH LINE OF LOT 6, BLOCK 1, HERITAGE SQUARE FOURTH ADDITION, IS ASSUMED TO HAVE A BEARING OF NORTH 89 DEGREES 46 MINUTES 45 SECONDS EAST.  
• DENOTES A 1/2 INCH IRON PIPE MONUMENT FOUND AND MARKED BY LICENSE NO. 44109, UNLESS SHOWN OTHERWISE.  
NOTE: ANY REQUIRED INTERIOR MONUMENT LOCATION ON THIS PLAT WITH NO MONUMENT SYMBOL SHOWN, INDICATES AN INTERIOR PLAT MONUMENT THAT WILL BE SET, AND WHICH SHALL BE IN PLACE WITHIN ONE YEAR AFTER THE RECORDING OF THIS PLAT.



KNOW ALL MEN BY THESE PRESENTS: That K. Hovnanian T&C Homes at Minnesota, L.L.C., a Minnesota limited liability company, fee owner of the following described property situated in the City of Maplewood, County of Ramsey, State of Minnesota:

Lots 3, 4, 6, and 7, Block 1, HERITAGE SQUARE FOURTH ADDITION.

Has caused the same to be surveyed and platted as HERITAGE SQUARE FIFTH ADDITION and does hereby dedicate to the public for public use forever the easements for drainage and utility purposes as shown on this plat.

In witness whereof said K. Hovnanian T&C Homes at Minnesota, L.L.C., a Minnesota limited liability company, has caused these presents to be signed by its proper officer this 9<sup>th</sup> day of June, 2008.

Signed: K. Hovnanian T&C Homes at Minnesota, L.L.C.

Kevin M. Clark Vice President of Land Development.  
Kevin M. Clark

STATE OF Minnesota  
COUNTY OF Hennepin  
The foregoing instrument was acknowledged before me this 11<sup>th</sup> day of June, 2008, by Kevin M. Clark, Vice President of Land Development for K. Hovnanian T&C Homes at Minnesota, L.L.C., a Minnesota limited liability company, on behalf of the company.

Nicole L. Olson  
Nicole L. Olson  
Notary Public, Minnesota  
My commission expires 01/31/2011

I, Jonathan M. Pittmann, Professional Land Surveyor, do hereby certify that I have surveyed or directly supervised the survey of the property described on this plat; prepared this plat or directly supervised the preparation of this plat; that this plat is a correct representation of the boundary survey; that all mathematical data and labels are correctly designated on this plat; that all monuments depicted on this plat have been correctly set; that all monuments indicated on this plat will be correctly set within one year; that all water boundaries and wet lands, as defined in Minnesota Statutes, Section 505.01, Subd. 3, as of the date of the surveyor's certification are shown and labeled on this plat; and all public ways are shown and labeled on this plat.

Dated this 21<sup>st</sup> day of MAY, 2008.

Jonathan M. Pittmann  
Jonathan M. Pittmann, Professional Land Surveyor  
Minnesota License No. 44647

STATE OF MINNESOTA  
COUNTY OF HENNEPIN  
The foregoing Surveyor's Certificate was acknowledged before me this 21 day of May, 2008 by Jonathan M. Pittmann, a licensed Land Surveyor.

Michelle Marie Chapman  
Michelle Marie Chapman  
Notary Public, Minnesota  
My commission expires January 31, 2010



CITY OF MAPLEWOOD  
We do hereby certify that on the 9<sup>th</sup> day of June, 2008, the City Council of the City of Maplewood, Minnesota, approved this plat. Also, the conditions of Minnesota Statutes, Section 505.03, Subd. 2, have been fulfilled.

Giana Tongue Mayor  
Karen Orloff Clerk

DEPARTMENT OF PROPERTY RECORDS AND REVENUE  
Pursuant to Minnesota Statutes, Section 505.021, Subd. 9, taxes payable in the year 2008 on the land hereinbefore described have been paid. Also, pursuant to Minnesota Statutes, Section 272.12, there are no delinquent taxes and transfer entered this 8<sup>th</sup> day of July, 2008.

Mark Oswald Director  
Department of Property Records and Revenue  
By [Signature] Deputy

COUNTY SURVEYOR  
I hereby certify that this plat complies with the requirements of Minnesota Statutes, Section 505.021, and is approved pursuant to Minnesota Statutes, Section 383A.42, this 9<sup>th</sup> day of July, 2008.

David D. Claypool  
David D. Claypool, P.L.S.  
Ramsey County Surveyor

County Recorder, County of Ramsey, State of Minnesota  
I hereby certify that this plat of HERITAGE SQUARE FIFTH ADDITION was filed in the office of the County Recorder for public record on this 9<sup>th</sup> day of July, 2008, at 4 o'clock P.M. and was duly filed in Book 123 of Plats, Page 43, as Document Number 4-105924.

James W. Carroll  
Deputy County Recorder