

HUOT ADDITION

KNOW ALL MEN BY THESE PRESENTS: That Pinot Properties, LLC, a Minnesota Limited Liability Company, fee owner of the following described property situated in the City of Little Canada, County of Ramsey, State of Minnesota:

The South 884 feet of the East 290 feet of the Southwest Quarter of Section 5, Township 29 North, Range 22 West, Ramsey County, Minnesota.

Has caused the same to be surveyed and platted as HUOT ADDITION and does hereby dedicate or donate to the public for public use forever the public ways and the drainage and utility easements as shown on this plat.

In witness whereof said Pinot Properties, LLC, a Minnesota Limited Liability Company, has caused these presents to be signed by its proper officers this 24th day of June, 2009.

Signed: Pinot Properties, LLC

Kevin Muir Patty
Manager

Ann Marie Claridge
Manager

STATE OF MINNESOTA
COUNTY OF Ramsey

The foregoing instrument was acknowledged before me this 24th day of June, 2009, by Kevin Muir Patty, as Manager, and Ann Marie Claridge, as Manager, of Pinot Properties, LLC, A Minnesota Limited Liability Company, on behalf of the company.

Kathleen A. Glanzer
KATHLEEN A. GLANZER
Notary Public, Ramsey County, Minnesota.
My Commission Expires 1-31-2010

I, Ronald P. Alwin, Professional Land Surveyor, do hereby certify that I have surveyed or directly supervised the survey of the property described on this plat; prepared this plat or directly supervised the preparation of this plat; that this plat is a correct representation of the boundary survey; that all mathematical data and labels are correctly designated on this plat; that all monuments depicted on this plat have been correctly set; that all monuments indicated on this plat will be correctly set within one year; that all water boundaries and wet lands, as defined in Minnesota Statutes, Section 505.01, Subd. 3, as of the date of the surveyor's certification are shown labeled on this plat; and all public ways are shown and labeled on this plat.

Dated this 24th day of June, 2009.

Ronald P. Alwin
Ronald P. Alwin, Professional Land Surveyor
Minnesota License No. 17765

STATE OF MINNESOTA
COUNTY OF ANOKA

The foregoing Surveyor's Certificate was acknowledged before me this 24th day of JUNE, 2009, by Ronald P. Alwin, a Licensed Land Surveyor.

Alan Irwin
ALAN IRWIN
Notary Public, Anoka County, Minnesota.
My Commission Expires January 31, 2010.

City of Little Canada

We do hereby certify that on the 22nd day of June, 2009, the City Council of the City of Little Canada, Minnesota, approved this plat. Also, the conditions of Minnesota Statutes, Section 505.03, Subd. 2, have been fulfilled.

William J. ...
Mayor
Patricia ...
Clerk

Department of Property Records and Revenue

Pursuant to Minnesota Statutes, Section 505.021, Subd. 9, taxes payable in the year 2009 on the land hereinbefore described have been paid. Also, pursuant to Minnesota Statutes, Section 272.12, there are no delinquent taxes and transfer entered this 3rd day of August, 2009.

Mark E. Oswald, Director
Department of Property Records and Revenue

By Abbie ..., Deputy

County Surveyor

I hereby certify that this plat complies with the requirements of Minnesota Statutes, Section 505.021, and is approved pursuant to Minnesota Statutes, Section 383A.42, this 26 day of August, 2009.

Michael D. Frebiger
~~David D. Claypool, P.L.S.~~ Michael D. Frebiger, P.L.S.
Ramsey County Surveyor

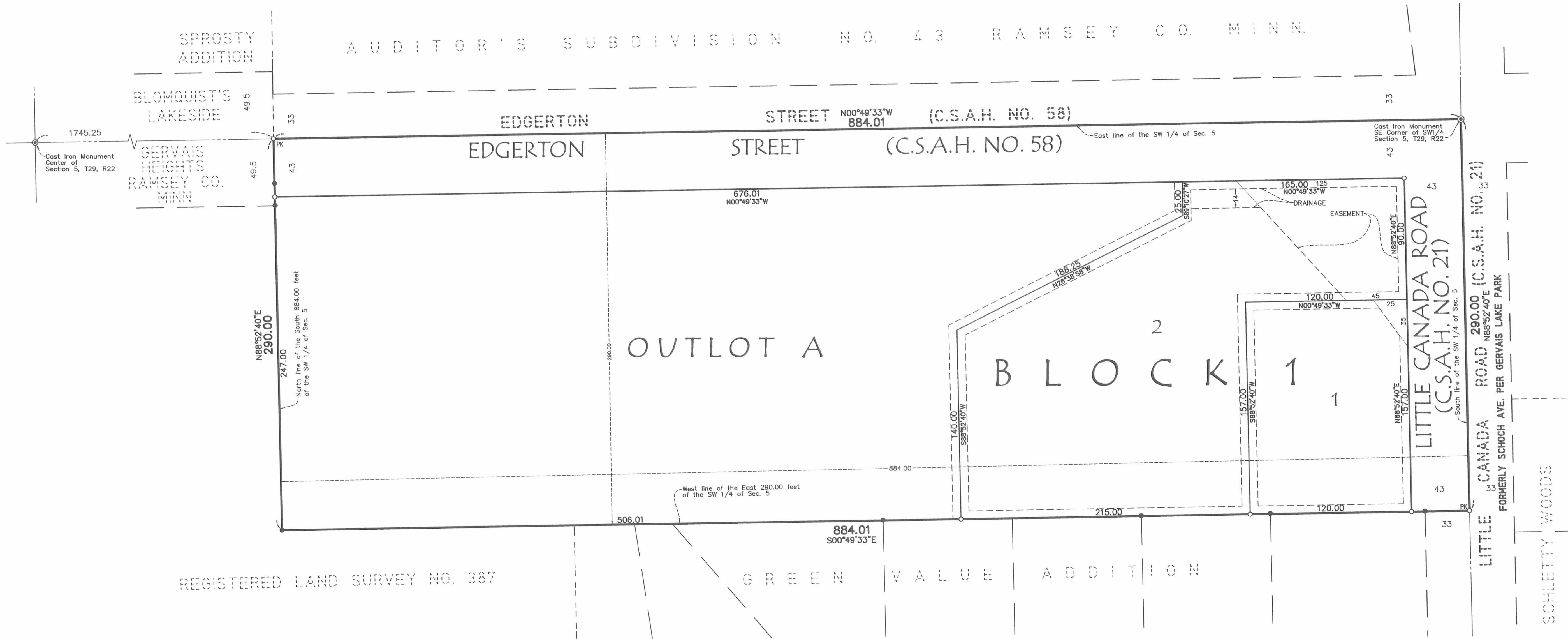
County Recorder, County of Ramsey, State of Minnesota

I hereby certify that this plat of HUOT ADDITION was filed in the office of the County Recorder for public record on this 27th day of AUGUST, 2009, at 4:00 o'clock P.M. and was duly filed in Book 124 of Plats, Pages 12 and 13 as Document Number 4178604.

Jamie D. ...
Deputy County Recorder

HUOT ADDITION

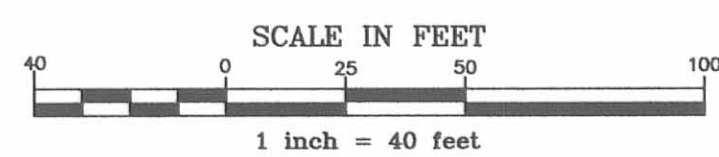
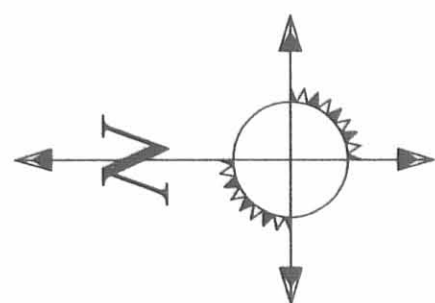
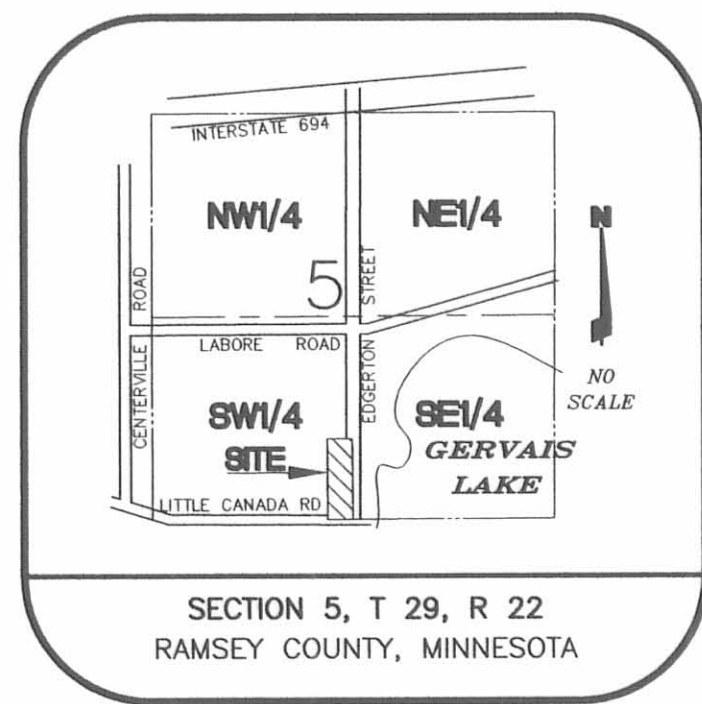
A U D I T O R ' S S U B D I V I S I O N N O . 4 3 R A M S E Y C O . M I N N .



REGISTERED LAND SURVEY NO. 387

G R E E N V A L U E A D D I T I O N

VICINITY MAP



LEGEND

- ⊙ Denotes found Ramsey County Cast Iron Monument
- Denotes found 1/2 inch iron pipe
- Denotes 1/2 inch by 14 inch iron pipe monument set and marked by License No.17765
- PK ○ Denotes PK nail with washer set and marked by License No.17765

Any required interior monument location on this plat with no monument symbol shown, indicates an interior plat monument that will be set, and which shall be in place within one year after the recording of this plat.

The orientation of this bearing system is based upon the East line of the SW 1/4 of Section 5, T29, R22, which is assumed to bear N00°49'33\"/>

TYPICAL EASEMENTS:

