

# SERENE HILLS ESTATES PLAT FOUR

KNOW ALL MEN BY THESE PRESENTS: That Lexington Estates Townhomes Association Three, Inc., a Minnesota non-profit corporation, owner of the following described property situated in the City of Shoreview, County of Ramsey, State of Minnesota:

Lot 22, Block 1, SERENE HILLS ESTATES PLAT THREE, Ramsey County, Minnesota.

Has caused the same to be surveyed and platted as SERENE HILLS ESTATES PLAT FOUR and does hereby dedicate to the public for public use forever the public way as shown on this plat.

In witness whereof said Lexington Estates Townhomes Association Three, Inc., a Minnesota non-profit corporation, has caused these presents to be signed by its proper officer this 19<sup>th</sup> day of AUGUST, 2011.

Signed: Lexington Estates Townhomes Association Three, Inc.

Frederick H. Behrens  
Frederick H. Behrens, President

STATE OF MINNESOTA  
COUNTY OF RAMSEY

The foregoing instrument was acknowledged before me this 19<sup>th</sup> day of AUGUST, 2011, by Frederick H. Behrens, as President of Lexington Estates Townhomes Association Three, Inc., a Minnesota non-profit corporation, on behalf of the corporation.

Debbie L. Munich  
Debbie L. Munich

Notary Public, RAMSEY County, Minnesota  
My Commission Expires JAN 31, 2014

I, Jason E. Rud, Licensed Land Surveyor, do hereby certify that I have surveyed or directly supervised the survey of the property described on this plat; prepared this plat or directly supervised the preparation of this plat; that this plat is a correct representation of the boundary survey, that all mathematical data and labels are correctly designated on this plat; that all monuments depicted on this plat have been correctly set; that all water boundaries and wet lands, as defined in Minnesota Statutes, Section 505.01, Subd. 3, as of the date of the surveyor's certification are shown and labeled on this plat; and all public ways are shown and labeled on this plat.

Dated this 12<sup>th</sup> day of August, 2011.

Jason E. Rud  
Jason E. Rud, Land Surveyor  
Minnesota License No. 41578

STATE OF MINNESOTA  
COUNTY OF RAMSEY

The foregoing Surveyor's Certificate was acknowledged before me this 13<sup>th</sup> day of August, 2011, by Jason E. Rud, a Licensed Land Surveyor.

Debbie L. Munich  
Debbie L. Munich

Notary Public, RAMSEY County, Minnesota  
My Commission Expires JAN 31, 2014

City of Shoreview  
We do hereby certify that on the 7<sup>th</sup> day of June, 2011, the City Council of the City of Shoreview, Minnesota, approved this plat. Also, the conditions of Minnesota Statutes, Section 505.03, Subd. 2, have been fulfilled.

Sandra Martin Mayor Troy C. Schwan City Clerk

Department of Property Records and Revenue  
Pursuant to Minnesota Statutes, Section 505.021, Subd. 9, taxes payable in the year 2011 on the land hereinbefore described have been paid. Also, pursuant to Minnesota Statutes, Section 272.12, there are no delinquent taxes and transfers entered this 24<sup>th</sup> day of August, 2011.

Mark Oswald Director By Mary Kay Simpson Deputy  
Property Records and Revenue

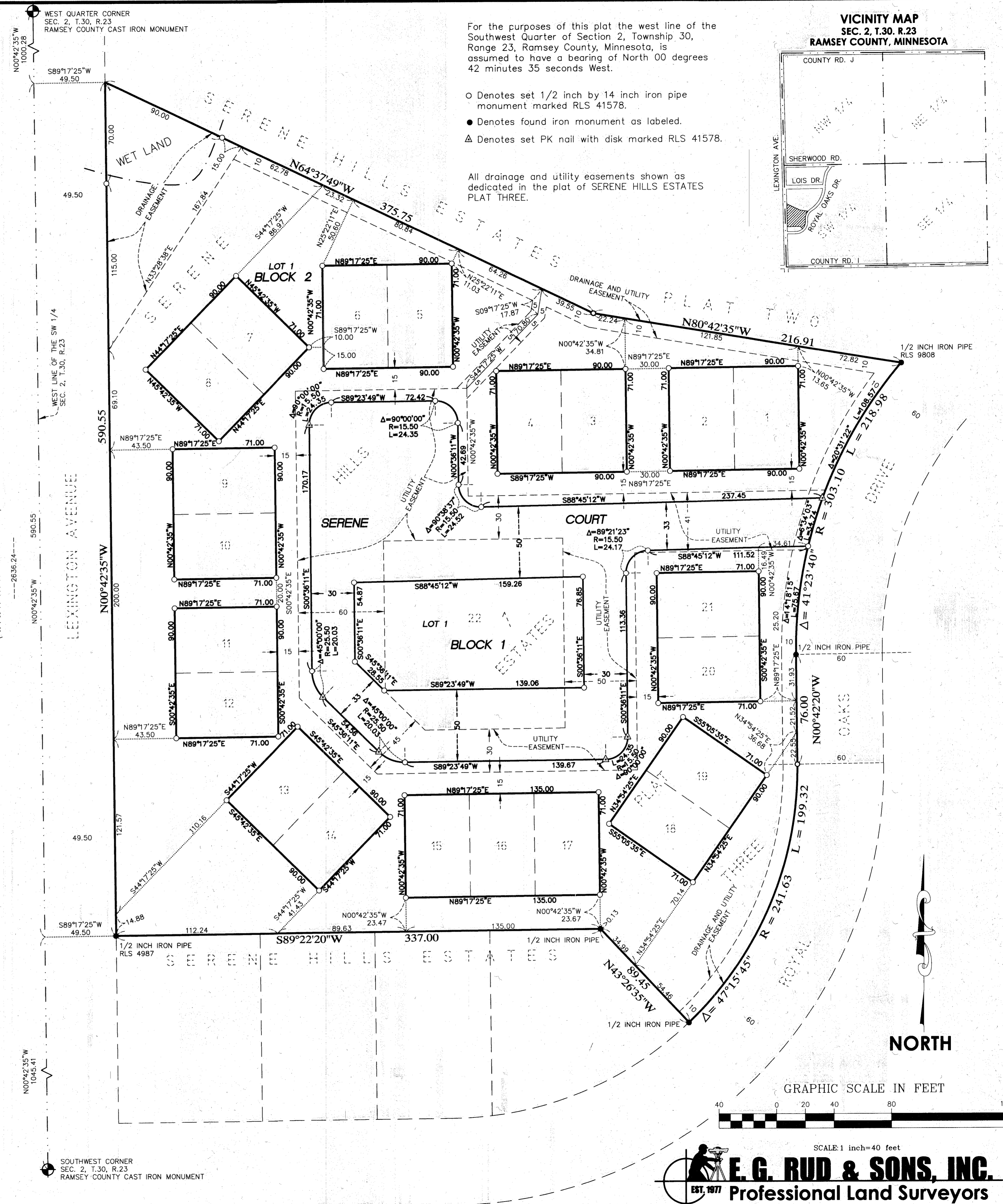
County Surveyor  
I hereby certify that this plat complies with the requirements of Minnesota Statutes, Section 505.021, and is approved pursuant to Minnesota Statutes, Section 383A.42, this 19<sup>th</sup> day of AUGUST, 2011.

Craig W. Hinzman  
Craig W. Hinzman, L.S.  
Ramsey County Surveyor

County Recorder  
County of Ramsey, State of Minnesota  
I hereby certify that this plat of SERENE HILLS ESTATES PLAT FOUR was filed in the office of the County Recorder for public record on this 30<sup>th</sup> day of AUGUST, 2011, at 9:00 o'clock A.M. and was duly filed in Book 125 of Plots, Page 1 as Document Number 4293604.

Jane W. Carroll  
Deputy County Recorder

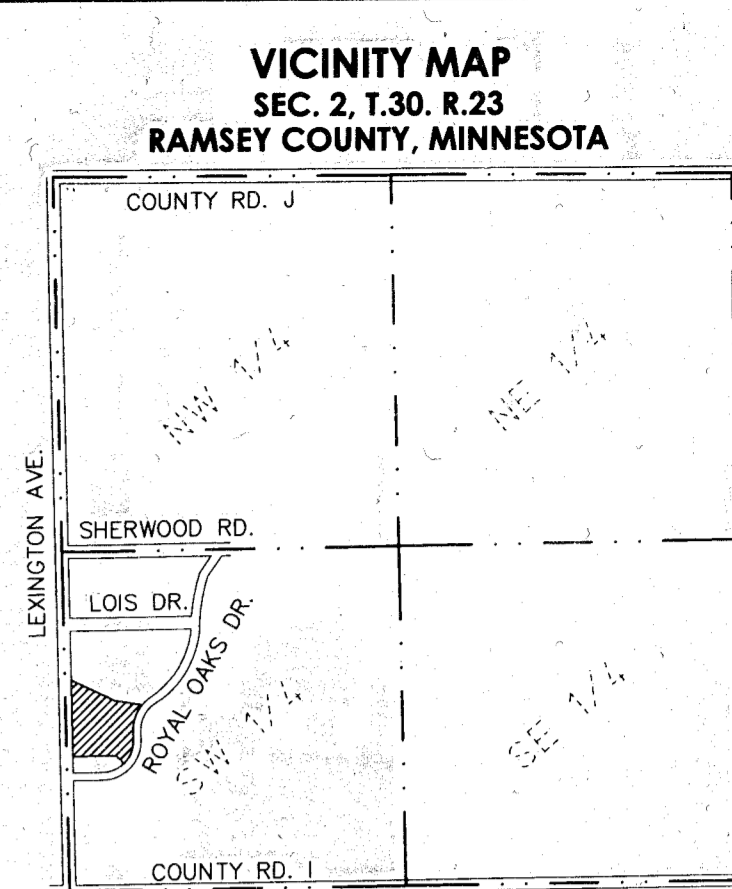
"OFFICIAL PLAT"



For the purposes of this plat the west line of the Southwest Quarter of Section 2, Township 30, Range 23, Ramsey County, Minnesota, is assumed to have a bearing of North 00 degrees 42 minutes 35 seconds West.

○ Denotes set 1/2 inch by 14 inch iron pipe monument marked RLS 41578.  
● Denotes found iron monument as labeled.  
△ Denotes set PK nail with disk marked RLS 41578.

All drainage and utility easements shown as dedicated in the plat of SERENE HILLS ESTATES PLAT THREE.



GRAPHIC SCALE IN FEET  
0 20 40 80 160  
SCALE: 1 inch=40 feet  
**E. G. RUD & SONS, INC.**  
EST. 1977 Professional Land Surveyors