

UPDATE ADDITION

KNOW ALL MEN BY THESE PRESENTS: That Warehouse Rentals Company, LLP, a Minnesota Limited Liability Partnership, owner, and American Bank of St. Paul, a Minnesota Banking Corporation, mortgagee and Park Midway Bank, a Minnesota Banking Corporation, mortgagee of the following described property situated in the City of Saint Paul, County of Ramsey, State of Minnesota:

All that part of the 150 foot strip of land in the Southeast Quarter of the Northeast Quarter of Section 29, Township 29, Range 23, as conveyed by Augustus K. Barnum and wife to the St. Paul and Northern Pacific Rail-way Company, by Deed dated June 8, 1885, filed for record June 19, 1885, and duly recorded in Book 135 of Deeds on pages 78 and 79, records of said Ramsey County; and that part of Block K, St. Anthony Park Addition to St. Paul, Minnesota, and that part of Baker Street (a portion of which was renamed Hersey Street) as dedicated on the plat of St. Anthony Park Addition to St. Paul, Minnesota; the alley, vacated, donated and dedicated in the plat of St. Anthony Park Addition to St. Paul, Minnesota lying between Lots 19 and 20, Block 68, St. Anthony Park Addition to St. Paul, Minnesota; and that part of the 24 foot wide public alley originally dedicated on the plat of St. Anthony Park Addition to St. Paul, Minnesota and rededicated and widened on the plat of Rearrangement of Blocks 62, 67, 68 and Lot 1 of Block 75, St. Anthony Park lying between Block K, St. Anthony Park Addition to St. Paul, Minnesota and Block 3, Rearrangement of Blocks 62, 67, 68 and Lot 1 of Block 75, St. Anthony Park; and that part of Lot 18, Block 69, St. Anthony Park Addition to St. Paul, Minnesota; and those parts of the vacated alley, and vacated Endicott Street, which accrued to Lots 17 and 18 in said Block 69 by reason of the vacation thereof; and those parts of Lots 19 through 28 inclusive, Block 3, Rearrangement of Blocks 62, 67, 68 and Lot 1 of Block 75, St. Anthony Park; and those parts of vacated Endicott Street, which accrued to said Lots due to the vacation thereof; and that part of Lot 1, Block 1, Minnesota Transfer Addition, St. Paul, Minn.; and that part of vacated Hersey Street that accrued to said Lot 1 by reason of the vacation thereof, all according to the recorded plats thereof, contained within the following described tract: Beginning at the point of intersection of the northeasterly line of Lot 17, Block 69, St. Anthony Park Addition to St. Paul, Minnesota, and a line projected southwesterly through a point in the southwesterly line of Lot 19, Block 3, Rearrangement of Blocks 62, 67, 68 and Lot 1 of Block 75, St. Anthony Park, distant 14.88 feet northwesterly from the southeasterly corner of said Lot 19, and a point in the northeasterly line of said Lot 19, distant 13.94 feet northwesterly from the northeasterly corner of said Lot 19; thence North 37 degrees 14 minutes 50 seconds East, assumed basis for bearings, 281.40 feet along said projected line and its Northeasterly extension; thence South 51 degrees 28 minutes 38 seconds East 498.72 feet; thence South 38 degrees 31 minutes 22 seconds West 108.47 feet to the Southwesterly line of said 150 foot strip; thence South 50 degrees 38 minutes 30 seconds East 33.00 feet along said southwesterly line, to a line parallel with and distant 33.00 feet northwesterly from a line hereinafter described as Line "X"; thence South 38 degrees 31 minutes 22 seconds West 18.73 feet along said parallel line; thence Southwesterly 38.18 feet along said parallel line on a tangential curve, concave to the southeast; radius 250.00 feet and central angle 08 degrees 44 minutes 59 seconds to the westerly line of Lot 1, Block 1, Minnesota Transfer Addition, St. Paul, Minn.; thence on a bearing of North, 57.66 feet along said westerly line; thence South 38 degrees 31 minutes 22 seconds West 132.62 feet to the southwesterly line of Lot 28, Block 3, Rearrangement of Blocks 62, 67, 68 and Lot 1 of Block 75, St. Anthony Park; thence North 53 degrees 21 minutes 00 seconds West 317.46 feet along the southwesterly line of said Block 3 and its northwesterly projection to the northeasterly projection of the southeasterly line of Lots 20 through 26, Block 69, St. Anthony Park Addition to St. Paul, Minnesota; thence South 38 degrees 39 minutes 00 seconds West 66.00 feet along the last said projected line to the northwesterly projection of the northeasterly line of Lot 1, Block 70, St. Anthony Park Addition to St. Paul, Minnesota; thence North 53 degrees 21 minutes 00 seconds West 85.00 feet along the last said projected line; thence North 20 degrees 55 minutes 21 seconds West 100.70 feet to the northeasterly corner of Lot 17, Block 69, St. Anthony Park Addition to St. Paul, Minnesota; thence North 53 degrees 21 minutes 00 seconds West 5.65 feet along the northeasterly line of said Lot 17 to the point of beginning;

Line "X" is described as: Commencing at the Southwest corner of Lot 12, Block 2, Minnesota Transfer Addition, St. Paul, Minn., thence West at a right angle to the West line of said Block 2, a distance of 264.5 feet to a point in the West line of Block 1, Minnesota Transfer Addition St. Paul, Minn.; thence North along the West line of said Block 1, a distance of 610.45 feet to the point of beginning of the line herein described; thence northerly on a tangential curve concave to the East, radius of 217.00 feet and central angle of 38 degrees, 31 minutes, 22 seconds, for 145.90 feet; thence North 38 degrees, 31 minutes, 22 seconds East, tangent to the last described curve, 18.25 feet more or less, to a point in the Northeasterly line of said Lot 1, distant 75.78 feet southeasterly of the northwest corner of said Lot 1.

Have caused the same to be surveyed and platted as UPDATE ADDITION, and do hereby dedicate to the public for public use forever the public way and the utility easement as shown on this plat.

In witness whereof said Warehouse Rentals Company, LLP, a Minnesota Limited Liability Partnership, has caused these presents to be signed by its designated partner this 5th day of JUNE, 2008.

SIGNED: Warehouse Rentals Company, LLP

Sandra Jacobs
Sandra Jacobs, Partner

STATE OF MINNESOTA
COUNTY OF RAMSEY

The foregoing instrument was acknowledged before me this 5th day of JUNE, 2008, by Sandra Jacobs, Partner, of Warehouse Rentals Company, LLP, a Minnesota Limited Liability Partnership, on behalf of the partnership.

Judith A. LaBorg
Judith A. LaBorg
Notary Public, Ramsey County, Minnesota
My Commission Expires 1/31/2010

In witness whereof said American Bank of St. Paul, a Minnesota Banking Corporation, has caused these presents to be signed by its proper officer this 5th day of JUNE, 2008.

SIGNED: American Bank of St. Paul

Roger P. Hahn
Roger P. Hahn, Assistant Vice President, commercial

STATE OF MINNESOTA
COUNTY OF RAMSEY

The foregoing instrument was acknowledged before me this 5th day of JUNE, 2008, by Roger P. Hahn, Assistant Vice President, commercial, of American Bank of St. Paul, a Minnesota Banking Corporation, on behalf of the corporation.

Judith A. LaBorg
Judith A. LaBorg
Notary Public, Ramsey County, Minnesota
My Commission Expires 1/31/2010

In witness whereof said Park Midway Bank, a Minnesota Banking Corporation, has caused these presents to be signed by its proper officer this 5th day of JUNE, 2008.

SIGNED: Park Midway Bank

Kathy Bjerke
Kathy Bjerke, Vice President

STATE OF MINNESOTA
COUNTY OF RAMSEY

The foregoing instrument was acknowledged before me this 6th day of JUNE, 2008, by Kathy Bjerke, Vice President, of Park Midway Bank, a Minnesota Banking Corporation, on behalf of the corporation.

Elke M. Hobus
Elke M. Hobus
Notary Public, Ramsey County, Minnesota
My Commission Expires 1/31/2013

I, Richard C. Person, Professional Land Surveyor, do certify that I have surveyed or directly supervised the survey of the property described on this plat; prepared this plat or directly supervised the preparation of this plat; that this plat is a correct representation of the boundary survey; that all mathematical data and labels are correctly designated on this plat; that all monuments depicted on this plat have been correctly set; that all water boundaries and wet lands as defined in Minnesota Statutes, Section 505.01, Subd. 3, as of the date of the surveyor's certification are shown and labeled on this plat; and all public ways are shown and labeled on the plat.

Dated this 9th day of JUNE, 2008

Richard C. Person
Richard C. Person, Professional Land Surveyor
Minnesota License No. 23300

STATE OF MINNESOTA
COUNTY OF RAMSEY

The foregoing Surveyor's Certificate was acknowledged before me this 5th day of JUNE, 2008, by Richard C. Person, a Professional Land Surveyor.

Judith A. LaBorg
Judith A. LaBorg
Notary Public, Ramsey County, Minnesota
My Commission Expires 1/31/2010

CITY OF SAINT PAUL
I do hereby certify that on the 2 day of January, 2008, the City Council of the City of Saint Paul, Minnesota, approved this plat. Also the conditions of Minnesota Statutes, Section 505.03, Subd. 2, have been fulfilled.

Shari Apow
City Clerk

DEPARTMENT OF PROPERTY RECORDS AND REVENUE

Pursuant to Minnesota Statutes, Section 505.021, Subd. 9, Taxes payable in the year 2008 on the land hereinbefore described have been paid. Also pursuant to Minnesota Statutes, Section 272.12, there are no delinquent taxes and transfer entered this 4th day of JUNE, 2008.

Marc Oswald, Director By Mary Kay Simpson, Deputy
Property Records and Revenue

COUNTY SURVEYOR

I hereby certify that this plat complies with the requirements of Minnesota Statutes, Section 505.021, and is approved Pursuant to Minnesota Statutes, Section 383A.42, this 9th day of JUNE, 2008.

David D. Claypool
David D. Claypool, P.L.S.
Ramsey County Surveyor

COUNTY RECORDER COUNTY OF RAMSEY, STATE OF MINNESOTA

I hereby certify that this plat of UPDATE ADDITION was filed in the office of the County Recorder for public record on this 9th day of JUNE, 2008, at 4:00 o'clock P.M., and was duly filed in Book 123 of Plats, Pages 37 and 38, as Document Number 4100817.

James W. Carroll
Deputy County Recorder

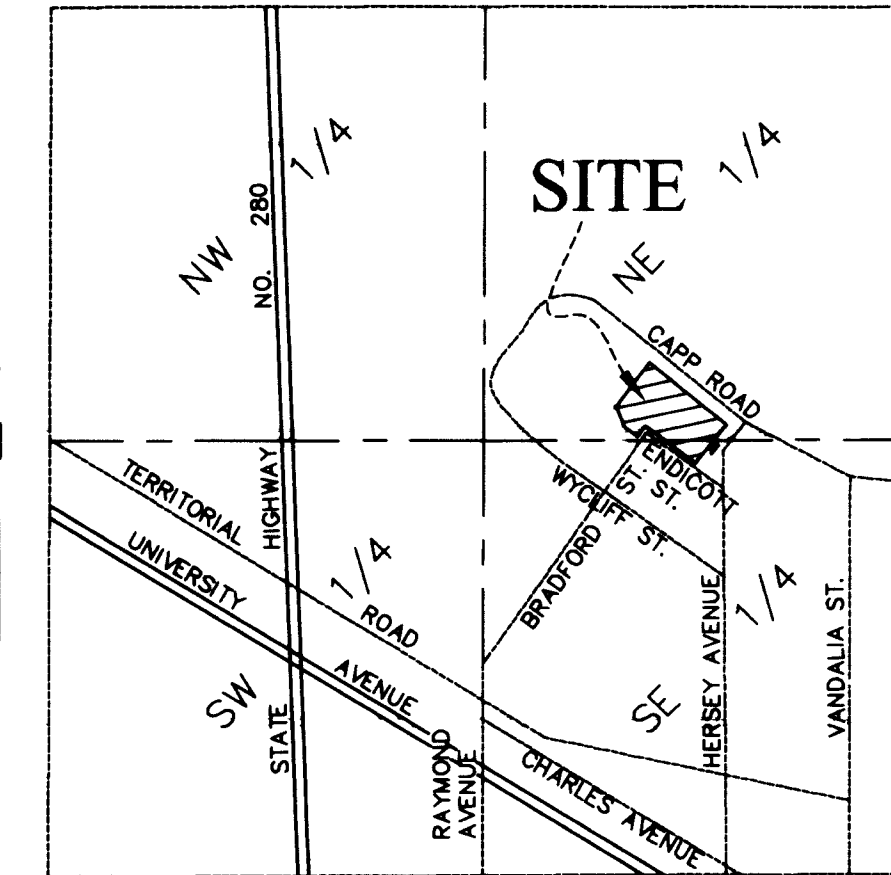
REGISTRAR OF TITLES COUNTY OF RAMSEY, STATE OF MINNESOTA

I hereby certify that this plat of UPDATE ADDITION was filed in the office of the Registrar of Titles for public record on this 9th day of JUNE, 2008, at 4:00 o'clock P.M., and was duly filed in Book 41 of Plats, Pages 37 and 38, as Document Number 2043252.

James W. Carroll
Deputy Registrar of Titles

UPDATE ADDITION

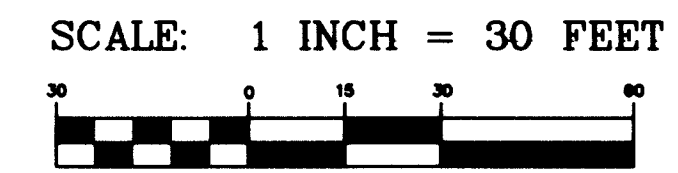
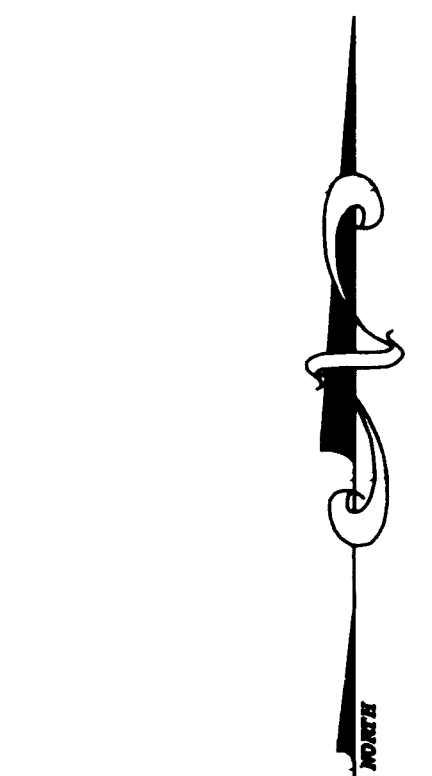
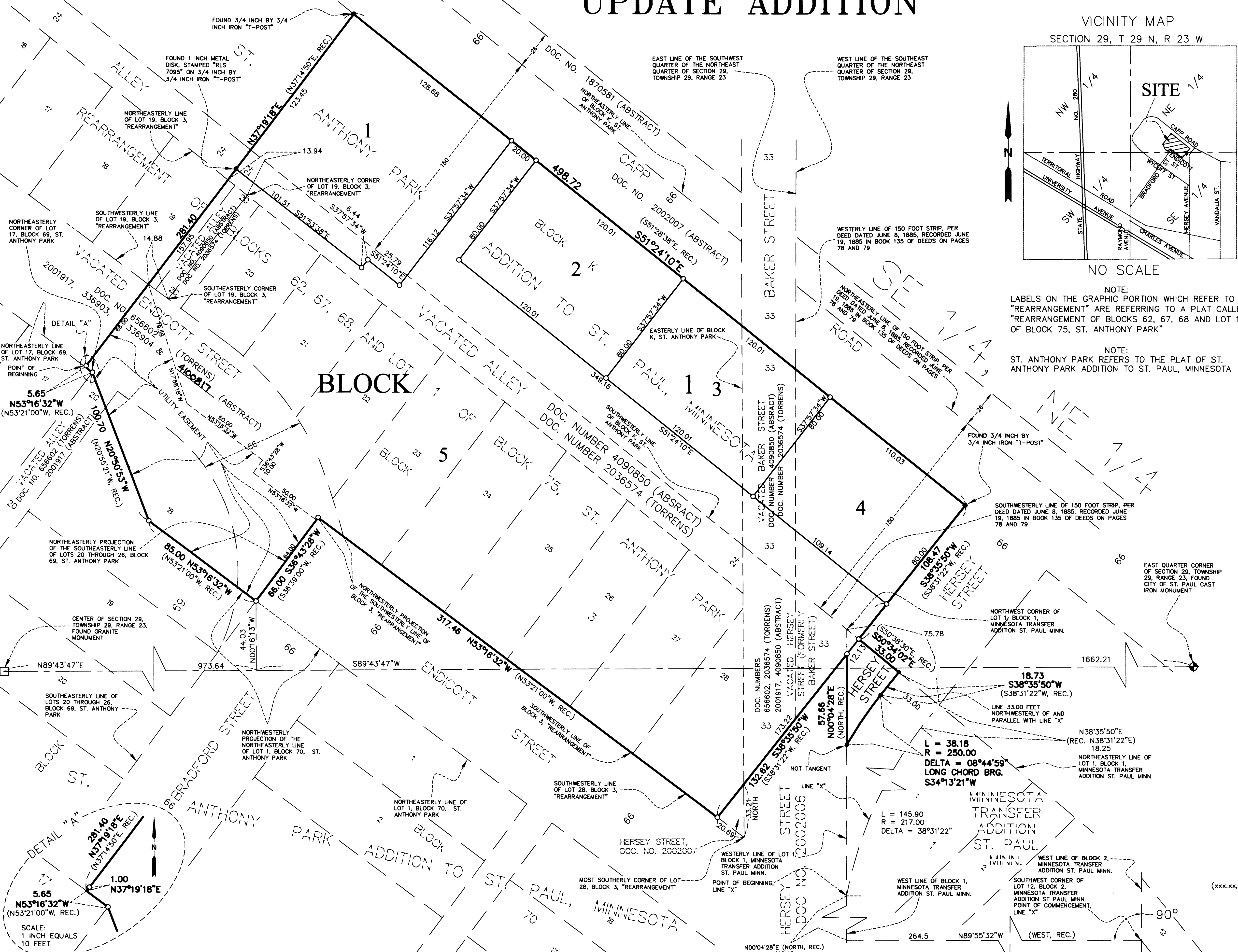
VICINITY MAP
SECTION 29, T 29 N, R 23 W



NO SCALE

NOTE:
LABELS ON THE GRAPHIC PORTION WHICH REFER TO "REARRANGEMENT" ARE REFERRING TO A PLAT CALLED "REARRANGEMENT OF BLOCKS 62, 67, 68 AND LOT 1 OF BLOCK 75, ST. ANTHONY PARK"

NOTE:
ST. ANTHONY PARK REFERS TO THE PLAT OF ST. ANTHONY PARK ADDITION TO ST. PAUL, MINNESOTA



- LEGEND**
- Denotes set 5/8 X 14 inch rebar with cap No. 23300
 - Denotes Found Monument, size, type and cap info. as noted on drawing
 - Denotes P.K. Nail set in bituminous road surface
 - (xxx.xx, REC.) Refers to the Record bearing in deed number 3934943 (recorded March 26, 2006) and deed number 3505529 (recorded June 5, 2002)
- Bearings shown are based Ramsey County Coordinate System NAD83, 1991 adjustment

SCALE: 1 INCH EQUALS 10 FEET